

DEPARTMENT OF THE ARMY TECHNICAL MANUAL

DIRECT AND GENERAL SUPPORT AND DEPOT MAINTENANCE
REPAIR PARTS AND SPECIAL TOOLS LIST
WELDING MACHINE, ARC: GENERATOR; ELECTRIC MOTOR DRIVEN
AC 220V, 3 PHRASE, 60HZ;
SINGLE OPERATOR; REMOTE CONTROL;
300 AMP DC ARC; WHEEL MTD, 4 WHEELS, STEEL TIRES
60 AMP AT 20V MIN, 375 AMP AT 40V MAX CURRENT
(LIBBY MODEL LA300)
FSN 3431-081-8059

**DIRECT AND GENERAL SUPPORT AND DEPOT MAINTENANCE
REPAIR PARTS AND SPECIAL TOOLS LIST**

**WELDING MACHINE, ARC; GENERATOR;
ELECTRIC MOTOR DRIVEN; AC, 220V, 3 PHASE; 60 HZ;
SINGLE OPERATOR; REMOTE CONTROL; 300 AMP DC ARC;
WHEEL MTD, 4 WHEELS, STEEL TIRES:
60 AMP AT 20V MIN, 375 AMP AT 40V MAX CURRENT
(LIBBY MODEL LA300)
FSN 3431-081-8059**

		Paragraph	page
SECTION I.	INTRODUCTION		
	Scope	1	iii
	General	2	iii
	Explanation of columns	3	iii
	Special information.....	4	iv
	How to locate repair parts.....	5	v
	Abbreviations	6	v
	Federal supplies for manufacturers	7	v
	Report of equipment publications improvements	8	v
SECTION II.	REPAIR PARTS FOR DS, GS, AND DEPOT MAINTENANCE		
	Group 10. Front Axle		
	1000 Front axle assembly.....		1
	Group 11. Rear Axle		
	1100 Rear axle assembly		1
	Group 13. Wheels		
	1311 Wheel assembly		1
	Group 22. Body Chassis or Hull, and Accessory Items		
	2202 Accessory items		2
	2210 Data plates		3
	Group 44. Welding Equipment		
	4401 Rotor assembly.....		4

*The manual together with TM 5-3431-207-20P supersedes TM 5-3431-207-25P, 24 June 1963.

	page
4402 Star assembly	4
4403 Brush holder assembly	5
4405 Frame support, housing carrier	7
4406 Ventilating, cooling system	9
4407 Control panels, housing	9
4409 Protective devices, electrical	16
4410 Switching timing and seed control	16
4411 Resistor components	21
4412 Transformer components	21
Group 95. General use Standardized Parts	
9501 Bulk material	23
Group 99. Parts Peculiar	
9901 Multi-listed parts	23

SECTION III. SPECIAL TOOLS, TEST AND SUPPORT EQUIPMENT FOR DS, GS, AND
 DEPOT MAINTENANCE (NOT APPLICABLE)
 SECTION IV. FEDERAL STOCK NUMBER AND REFERENCE NUMBER INDEX

SECTION I INTRODUCTION

1. Scope

This manual lists repair parts required for the performance of direct support, general support, and depot maintenance of the welder.

2. General

a. The repair parts list is arranged as follows:

(1) Individual parts and major assemblies are listed alphabetically by item name within the numbered functional groups.

(2) Assembly components and subassemblies are indented and listed alphabetically by item name under major assemblies.

b. This Repair Parts and Special Tools List is divided into the following sections:

(1) *Repair Parts-Section II*. A list of repair parts authorized for the performance of maintenance at the direct support, general support, and depot level.

(2) *Special Tool, Test and Support Equipment-Section III*. A list of special tools, test and support equipment authorized for the performance of maintenance at the direct support, general support, and depot level (not applicable).

(3) *Federal Stock Number and Reference Number Index-Section IV*. A list of Federal stock numbers followed by reference numbers in ascending alpha-numeric sequence cross-referenced to index number.

3. Explanation of columns

The following provides an explanation of columns in the tabular lists in Sections II and III:

a. *Source, Maintenance, and Recoverability Codes (SMR), Column (1)*.

(1) Source Code, indicates the selection status and source for the listed item. Source codes used are:

<i>Code</i>	<i>Explanation</i>
P	Applied to repair parts which are stocked in or supplied from DSA/GSA or Army supply system, and authorized for use at indicated maintenance categories.
M	Applied to repair parts which are not procured or stocked but are to be MANUFACTURE at indicated maintenance categories.
A	Applied to assemblies which are not procured or stocked as such but made up of two or more units, each of which carry individual stock numbers and descriptions and are

<i>Code</i>	<i>Explanation</i>
	procured and stocked and can be assembled by units at indicated maintenance categories.
X	Applied to parts and assemblies which are not procured or stocked, the mortality of which is normally below that of the applicable end item, and the failure of which should result in retirement of the end item from the supply system.
X1	Applied to repair parts which are not procured or stocked. The requirement for which will be supplied by use of the next higher assembly or components.
X2	Applied to repair parts which are not stocked. The indicated maintenance category requiring such repair parts will attempt to obtain them through cannibalization: if not obtainable through cannibalization such repair parts will be requisitioned with supporting justification through normal supply channels
C	Applied to repair parts authorized for local procurements. If not obtainable from local procurement such repair parts will be requisitioned through normal supply channels with a supporting statement of non-availability from local procurement.
G	Applied to major assemblies that are procured with PEMA (Procurement Equipment Missile Army) funds for initial issue only to be used as exchange assemblies at DSU and GSU maintenance level. These assemblies will not be stocked above DSU and GSU level or returned to depot supply level.

Note

Source code is not shown on common hardware items known to be readily available in Army supply channels and through local procurement

(2) Maintenance Code, indicates the lowest category of maintenance authorized to install the listed item. The maintenance level codes are:

<i>Code</i>	<i>Explanation</i>
O.....	Organizational maintenance
F.....	Direct support maintenance
H.....	General support maintenance
D.....	Depot maintenance

(3) Recoverability Code, indicates whether unserviceable items should be returned for recovery or salvage. Items not coded are expendable. Recoverability codes are:

<i>Code</i>	<i>Explanation</i>
R	Applied to repair parts and assemblies which are economically repairable at DSU and GSU activities and normally are furnished by supply on an exchange basis.

Code	Explanation
T	Applied to high dollar value recoverable repair parts which are subject to special handling are issued on an exchange basis. Such repair parts normally are repaired or overhauled at depot maintenance activities.
U	Applied to repair parts specifically selected for salvage by reclamation units because of precious metal content, critical materials, high dollar value reusable casings or castings.

(4) This column also lists, below the SMR code, an index number for each item in ascending numerical sequence, which is used to locate items in the publication when the Federal stock number and/or reference number is known.

- b. *Federal Stock Number, Column (2).* This column indicates the Federal stock number for the item.
- c. *Description, Column (3).* This column indicates the Federal item name and any additional description of the item required. A part number or other reference number is followed by the applicable five-digit Federal supply code for manufacturers in parentheses. Material required for manufacture or fabrication is identified.
- d. *Unit of Issue, Column (4).* This column indicates the unit used as basis for issue, e.g., ea, pr, ft, yd, etc.
- e. *Quantity Incorporated in Unit Pack, Column (5).* This column indicates the actual quantity contained in the unit pack.
- f. *Quantity Incorporated in Unit, Column (6).* This column indicates the quantity of the item used in the functional group.
- g. *Thirty-Day DS/GS Maintenance Allowances, Columns (7) and (8).*

(1) The allowance columns are divided into three subcolumns. Indicated in each subcolumn is the quantity of items authorized for the number of equipments supported. Items authorized for use as required but not for initial stockage are identified with an asterisk in the allowance column.

(2) The quantitative allowances for DS/GS levels of maintenance will represent initial stockage for a 30 day period for the number of equipments supported.

(3) Determination of the total quantity of parts required for maintenance of more than 100 of these equipments can be accomplished by converting the equipment quantity to a decimal factor by placing a decimal point before the next to last digit of the number to indicate hundredths, and multiplying the decimal factor by the parts quantity authorized in the 51-100 allowance column. Example, authorized allowance for 51-100 equipments is 40; for 150 equipments multiply 40 by 1.50 or 60 parts required.

h. One Year Allowances Per 100 Equipments/Contingency Planning Purposes, Column (9). This column indicates the quantity required for distribution and contingency planning purposes. The range of items indicates total quantities of all authorized items required to provide for adequate support of 100 equipments for one year.

i. Depot Maintenance Allowance Per 100 Equipments, Column (10). This column indicates the quantity authorized for depot maintenance of 100 equipments. Items authorized for use but not for initial stockage are identified with an asterisk in the allowance column.

i. Illustration, Column (11).

(1) *Figure Number.* Indicates the figure number of the illustration which the item is shown.

(2) *Item Number.* Indicates the callout number used to reference the item in the illustration.

4. Special Information

a. Repair parts mortality has been based on 1,500 hours of operation per year.

b. Parts which require manufacture or assembly at a category higher than that authorized for installation will indicate in the source column the higher category.

c. The following publications pertain to the welder and its components:

- TM 5-3431-207-15 Operator, organizational, field and depot maintenance manual.
- TM 5-3431-207-20P Organizational maintenance repair parts and special tool lists.

5. How to Locate Repair Parts

a. When Federal stock number or reference number is unknown:

- (1) *First.* Using the table of contents, determine the functional group within which the repair part belongs.
- (2) *Second.* Find the illustration covering the functional group to which the repair part belongs.
- (3) *Third.* Identify the repair part on the illustration, and note the illustration figure and item number of the repair part.
- (4) *Fourth.* Using the Repair Parts Listing, find the functional group to which the repair part belongs and locate the illustration figure and item number noted on the illustration.

b. When Federal stock number or reference number is known:

- (1) *First.* Using the Index of Federal Stock Numbers and Reference Numbers, find the pertinent Federal stock number or reference number. This index is in ascending alphanumeric sequence cross-referenced to an index number.
- (2) *Second.* Using the Repair Part Listing, find the index number referenced in the Index of Federal stock numbers and reference numbers.

6. Abbreviations

ea.....	each
ft.....	feet (foot)
grp.....	Group
in.....	inch(es)
mtg.....	mounting(s)
No.....	number(s)

7. Federal Supply Codes for Manufacturers

Code	Manufacturer
00287.....	C.E.M. Co., Inc
01411.....	Westinghouse Electric Corp . Motor and Gearing Div.
03743.....	Appleton Electric Co.
04618.....	American Pamcor, Inc.
36024.....	Libby Welding Co, Inc.
36232.....	Lincoln Electric Co.
38443.....	Marlin-Rockwell (Co., Division of TRW, Inc.
59730.....	Thomas and Betts Co., The
74545.....	Hubbell Harvey, Inc.
88044.....	Aeronautical Standards Group Dept. of Navy and Air Force
96906.....	Military Standards Promulgated by Standardization Div. Directorate of Logistic Services DSA

8. Report of Equipment Publication, Improvement

Report of errors, omissions, and recommendations for improving this publication by the individual user is encouraged. Reports should be submitted on DA Form 2028 (Recommended Changes to DA Publications) and forwarded direct to Commanding General, U.S. Army Mobility Equipment Command, ATTN: AMSME-MPP, 4300 Goodfellow Boulevard. St. Louis, Mo. 6313.

(1) SMR CODE	(2) FEDERAL STOCK NUMBER	(3) DESCRIPTION		(4) UNIT OF ISSUE	(5) QTY INC IN UNIT PACK	(6) QTY INC IN UNIT	(7) 30-DAY DS MAINT ALLOWANCE			(8) 30-DAY GS MAINT ALLOWANCE			(9) 1-YR ALW PER 100 EQUIP CNTGCTY	(10) DEPOT MAINT ALW- PER 100 EQUIP	(11) ILLUS- TRATION	
		REFERENCE NO. & MFR. CODE	USABLE ON CODE				(a) 1-20	(b) 21-50	(c) 51-100	(a) 1-20	(b) 21-50	(c) 51-100			(a) FIG NO.	(b) ITEM NO.
		SECTION II - REPAIR PARTS FOR DIRECT SUPPORT, GENERAL SUPPORT AND DEPOT MAINTENANCE														
00001		GROUP 10 - FRONT AXLE														
00002		1000 - FRONT AXLE														
X2 O 00003		AXLE, FRONT T6988-1 (3232)		EA		1									1	4
X2 O 00004		BRACKET, TONGUE T7233 (6232)		EA		1									1	9
O 00005	5310-010-3028	NUT: tongue bracket mtg		EA		2	*	*	*	*	*	*	*	*	1	8
O 00006	5315-282-1448	PIN: tongue to bracket		EA		1	*	*	*	*	*	*	*	*	1	3
O 00007	5305-725-4183	SCREW: tongue bracket mtg		EA		2	*	*	*	*	*	*	*	*	1	1
X2 F 00008 00009	5310-017-8599	WASHER: tongue bracket mtg		EA		4									1	2
		GROUP 11 - REAR AXLE														
00010		1100 - REAR AXLE ASSEMBLY														
X2 F 00011		AXLE, REAR C267 (36232)		EA		1									2	1
O 00012	5310-010-3028	NUT: rear axle mtg		EA		2									2	8
O 00013	5305-725-4183	SCREW: rear axle mtg		EA		2									2	2
O 00114 00015	5310-017-8599	WASHER: rear axle mtg		EA		4									2	3
		GROUP 13 - WHEELS														
00016		1311 - WHEEL ASSEMBLY														
O 00017	5315-282-1448	PIN: front wheel mtg		EA		2	*	*	*	*	*	*	*	*	1	3
O 00018	5315-282-1448	PIN: rear wheel mtg		EA		2	*	*	*	*	*	*	*	*	2	7
X2 O 00019		RETAINER: front wheel S9262-34 (36232)		EA		2				SEE	GRP	9901			1	6

(1) SMR CODE	(2) FEDERAL STOCK NUMBER	(3) DESCRIPTION REFERENCE NO. & MFR. CODE USABLE ON CODE	(4) UNIT OF ISSUE	(5) QTY INC IN UNIT PACK	(6) QTY INC IN UNIT	(7) 30-DAY DS MAINT ALLOWANCE			(8) 30-DAY GS MAINT ALLOWANCE			(9) 1-YR ALW PER 100 EQUIP CNTGCTY	(10) DEPOT MAINT ALW- PER 100 EQUIP	(11) ILLUS- TRATION	
						(a) 1-20	(b) 21-50	(c) 51-100	(a) 1-20	(b) 21-50	(c) 51-100			(a) FIG NO.	(b) ITEM NO.
X2 O 00020		RETAINER: rear wheel S9262-34 (36232)	EA		2				SEE	GRP	9901			2	6
X2 O 00021		ROLLER, FRONT WHEEL T7208 (36232)	EA		34				SEE	GRP	9901			1	7
X2 O 00022		ROLLER, REAR WHEEL T7208 (36232)	EA		34				SEE	GRP	9901			2	5
X2 O 00023		WHEEL, FRONT S6116 (36232)	EA		2									1	5
X2 O 00024		WHEEL, REAR S5717 (36232)	EA		2									2	4
00025		GROUP 22 - BODY OR HULL, AND ACCESSORY ITEMS													
00026		2202 - ACCESSORY ITEMS													
P O 00027	3431-954-4215	CABLE ASSEMBLY, ELECTRODE LA300-1832 (36024)	EA		1	*	*	*	*	*	*	5	5	3	3
P O 00028	3431-954-4216	CABLE ASSEMBLY, GROUND LA300-1831 (36024)	EA		1	*	*	*	*	*	*	5	5	3	1
M O 00029		CABLE, POWER MANUFACTURE FROM:	EA		1									3	2
P O 00030	6145-807-8257	CABLE, POWER, ELECTRICAL (100 ft required)	FT						SEE	GRP	9501				
X2 O 00031	5975-258-0126	CLAMP, GROUND	EA		1									3	7
O 00032	5310-685-1429	NUT: ground clamp cable attaching	EA		1	*	*	*	*	*	*	*	*	3	8
O 00033	5305-171-1767	SCREW: ground clamp cable attaching	EA		1	*	*	*	*	*	*	*	*	3	9
X2 O 00034	3431-986-8450	CONTROL REMOTE EOW1000 (36024)	EA		1									4	
X2 O 00035		CABLE, REMOTE CONTROL EOW1003 (36232)	EA		1									4	1

(1) SMR CODE	(2) FEDERAL STOCK NUMBER	(3) DESCRIPTION REFERENCE NO. & MFR. CODE USABLE ON CODE		(4) UNIT OF ISSUE	(5) QTY INC IN UNIT PACK	(6) QTY INC IN UNIT	(7) 30-DAY DS MAINT ALLOWANCE			(8) 30-DAY GS MAINT ALLOWANCE			(9) 1-YR ALW PER 100 EQUIP CNTGCTY	(10) DEPOT MAINT ALW- PER 100 EQUIP	(11) ILLUS- TRATION	
							(a) 1-20	(b) 21-50	(c) 51-100	(a) 1-20	(b) 21-50	(c) 51-100			(a) FIG NO.	(b) ITEM NO.
X2 O 00036		CASE, REMOTE CONTROL EPN1001 (36024)		EA		1									4	2
X2 O 00037		HANDLE, RHEOSTAT S6153 (36232)		EA		1				SEE	GRP	9901			4	5
X2 O 00038		PLATE, RHEOSTAT DIAL M10088 (36232)		EA		1				SEE	GRP	9901			4	3
P O 00039	2905-713-6063	RHEOSTAT M50900 (36232)		EA		1				SEE	GRP	9901			4	7
O 00040	5307-207-1367	SCREW: cover attaching		EA		4	*	*	*	*	*	*	*	*	2	4
O 00041	5305-608-3307	SCREW: plate and rheostat mtg		EA		2	*	*	*	*	*	*	*	*	4	4
X2 O 00042	3431-994-9301	SETSCREW AN565D1024H3 (88044)		EA		1									4	6
P O 00043	3442-611-0115	HOLDER ASSEMBLY, ELECTRICAL M6327 (36232)		EA		1	*	*	*	*	*	*	5	3	3	5
O 00044	5310-938-5844	NUT: electrode holder cable attaching		EA		1	*	*	*	*	*	*	*	*	3	6
O 00045	5305-012-5673	SCREW: electrode holder handle attaching		EA		1	*	*	*	*	*	*	*	*	3	10
P O 00046	5940-955-9445	TERMINAL, CABLE T120 (36024)		EA		3	*	2	2	*	2	2	14	5	3	4
00047		2210 - DATA PLATES														
X2 O 00048		NAMEPLATE, ELECTRODE T3961 (36232)		EA		1										
X2 O 00049		NAMEPLATE, WORK T3962 (36232)		EA		1										
X2 F 00050	9905-307-3712	PLATE, CORPS OF ENGINEERS		EA		1										
X2 O 00051		PLATE, IDENTIFICATION T10990 (36232)		EA		1										
X2 F 00052	5315-664-7598	SCREW: Corps of Engineers plate mtg		EA		4										

(1) SMR CODE	(2) FEDERAL STOCK NUMBER	(3) DESCRIPTION REFERENCE NO. & MFR. CODE	(4) UNIT OF ISSUE	(5) QTY INC IN UNIT PACK	(6) QTY INC IN UNIT	(7) 30-DAY DS MAINT ALLOWANCE			(8) 30-DAY GS MAINT ALLOWANCE			(9) 1-YR ALW PER 100 EQUIP CNTGCTY	(10) DEPOT MAINT ALW- PER 100 EQUIP	(11) ILLUS- TRATION		
						(a) 1-20	(b) 21-50	(c) 51-100	(a) 1-20	(b) 21-50	(c) 51-100			(a) FIG NO.	(b) ITEM NO.	
																USABLE ON CODE
O 00053 00054	5305-057-9610	SCREW: nameplates mtg	EA		4	*	*	*	*	*	*	*				
00055		GROUP 44 - WELDING EQUIPMENT														
		4401 - ROTOR ASSEMBLY														
P HT 00056	6125-988-9941	ARMATURE ASSEMBLY, GENERATOR L2145-5 (36232)	EA		1				*	*	*	5	5	8	1	
P F 00057	2920-988-9940	ARMATURE EXCITER FBS24-80 (36232)	EA		1	*	*	*	*	*	*	5	5	7	8	
X2 F 00058		NUT: armature shaft T3545 (36232)	EA		1									7	5	
X2 F 00059	6115-587-5718	SPACER, ARMATURE SHAFT T3545 (36232)	EA		1									7	7	
X2 F 00060		WASHER: armature shaft T7090-1 (36232)	EA		1									7	6	
00061		4402 - STATOR ASSEMBLY														
F C0062	5306-225-8499	BOLT: exciter coil mtg	EA		4	*	*	*	*	*	*	*	*	7	27	
P F 00063	3431-995-3231	COIL, EXCITER FBS5E (36232)	EA		1	*	*	*	*	*	*	5	5	7	9	
X2 H 00064	6115-827-0003	COIL INTERPOLE S12261-6 (36232)	EA		4									5	5	
P H 00065	3431-954-4220	COIL SET, SERIES FKL120M (36232)	EA		1				*	*	*	5	5	5	4	
P H 00066	3431-995-1911	COIL SET, SHUNT FKL5E (36232)	EA		1				*	*	*	5	5	5	1	
M H 00067		LEAD, ELECTRICAL, POLARITY SWITCH TO EXCITER COILS MANUFACTURE FROM	EA		3											
X2 H 00068	5940-155-9686	TERMINAL C36 (59730)	EA		3											

(1) SMR CODE	(2) FEDERAL STOCK NUMBER	(3) DESCRIPTION REFERENCE NO. & MFR. CODE	(4) UNIT OF ISSUE	(5) QTY INC IN UNIT PACK	(6) QTY INC IN UNIT	(7) 30-DAY DS MAINT ALLOWANCE			(8) 30-DAY GS MAINT ALLOWANCE			(9) 1-YR ALW PER 100 EQUIP CNTGCTY	(10) DEPOT MAINT ALW- PER 100 EQUIP	(11) ILLUS- TRATION		
						(a) 1-20	(b) 21-50	(c) 51-100	(a) 1-20	(b) 21-50	(c) 51-100			(a) FIG NO.	(b) ITEM NO.	
X2 H 00069	5940-197-9772	TERMINAL C33 (59730)	EA		3											
P H 00070	6145-578-7521	WIRE, ELECTRICAL (5 ft required for each LEAD)	FT						SEE	GRP	9501					
O 00071	5310-176-8137	NUT: wiring harness lead attaching to exciter coil lead	EA		1	*	*	*	*	*	*	*	*			
X2 F 00072		POLE PIECE, EXCITER T3940-4 (36232)	EA		2									7	10	
X2 H 00073		POLE PIECE, INTERPOLE COILS S45738 (36232)	EA		4									5	6	
X2 H 00074		POLE PIECE, MAIN T5163 (36232)	EA		4									5	2	
O 00075	5305-011-0498	SCREW: wiring harness leads attaching to exciter coil lead	EA		1	*	*	*	*	*	*	*	*			
P HT 00076	6105-989-0531	STATOR ASSEMBLY, MOTOR M7539-1 (36232)	EA		1				*	*	*	5	5	12	1	
X1 00077		FRAME, MOTOR STATOR	EA		1				SEE	GRP	4405					
O 00078	5310-011-5545	WASHER: wiring harness lead attaching to exciter coil lead	EA		1	*	*	*	*	*	*	*	*			
00079		4403 - BRUSH HOLDER ASSEMBLY														
X2 H 00080		BRACKET, BRUSH HOLDER S5960 (36232)	EA		1									8	18	
P O 00081	5977-237-1609	BRUSH, EXCITER T6968 (36232)	EA		2	6	13	25	6	13	25	300	400	7	24	
P O 00082	5977-088-7134	BRUSH HOLDER ASSEMBLY, MAIN M6964-9A (36232)	EA		4	*	2	2	*	2	2	20	20	8	17	
O 00083	5306-225-8494	BOLT: main brush holder to stud	EA		4	*	*	*	*	*	*	*	*	6	7	
X2 O 00084		PLATE, MAIN BRUSH HOLDER RETAINER M6964-1B (36232)	EA		4									6	10	

(1) SMR CODE	(2) FEDERAL STOCK NUMBER	(3) DESCRIPTION REFERENCE NO. & MFR. CODE USABLE ON CODE	(4) UNIT OF ISSUE	(5) QTY INC IN UNIT PACK	(6) QTY INC IN UNIT	(7) 30-DAY DS MAINT ALLOWANCE			(8) 30-DAY GS MAINT ALLOWANCE			(9) 1-YR ALW PER 100 EQUIP CNTGCTY	(10) DEPOT MAINT ALW- PER 100 EQUIP	(11) ILLUS- TRATION		
						(a) 1-20	(b) 21-50	(c) 51-100	(a) 1-20	(b) 21-50	(c) 51-100			(a) FIG NO.	(b) ITEM NO.	
A O 00085	5305-269-3209	SCREW ASSEMBLED WASHER: brush holder stud	EA		4									6	1	
O 00086			SCREW: main brush holder	EA		4	*	*	*	*	*	*	*	*		
O 00087	5310-543-2705	WASHER: main brush holder	EA		4	*	*	*	*	*	*	*	*			
A O 00088			SCREW ASSEMBLED WASHER: brush spring mtg	EA		8									6	12
O 00089	5305-988-1721	SCREW: main brush spring mtg	EA		8	*	*	*	*	*	*	*	*			
O 00090			WASHER: main brush spring mtg	EA		8	*	*	*	*	*	*	*	*		
O 00091	5305-984-5674	SCREW: main brush holder plate to stud	EA		4	*	*	*	*	*	*	*	*	6	8	
P O 00092			SPRING, MAIN BRUSH HOLDER T8495 (36232)	EA		8	2	3	6	2	3	6	75	160	6	5
X2 O 00093	5970-587-5717	STUD, MAIN BRUSH HOLDER M6963-6 (36232)	EA		4									6	6	
X2 O 00094			TUBE, INSULATOR T1450 (36232)	EA		4								6	4	
X2 O 00095			WASHER: insulator	EA		4								6	3	
X2 O 00096			WASHER: main brush holder	EA		4								6	2	
X2 O 00097			WASHER: main brush holder stud T9020 (36232)	EA		4								6	11	
P O 00098		5977-088-7132	BRUSH HOLDER, EXCITER S6531A (36232)	EA		2	*	*	2	*	*	2	10	10	7	23
X1 00099		5977-967-4279	BRUSH, INSULATOR T8167 (36232)	EA		4									7	25
P O 00100	6105-031-2826	SPRING, BRUSH	EA		2	2	2	3	2	2	3	30	40	7	22	
X1 00101	5970-967-4278	WASHER: insulator T7626 (36232)	EA		4									7	20	

(1) SMR CODE	(2) FEDERAL STOCK NUMBER	(3) DESCRIPTION REFERENCE NO. & MFR. CODE USABLE ON CODE	(4) UNIT OF ISSUE	(5) QTY INC IN UNIT PACK	(6) QTY INC IN UNIT	(7) 30-DAY DS MAINT ALLOWANCE			(8) 30-DAY GS MAINT ALLOWANCE			(9) 1-YR ALW PER 100 EQUIP CNTG	(10) DEPOT MAINT ALW- PER 100 EQUIP	(11) ILLUS- TRATION	
						(a) 1-20	(b) 21-50	(c) 51-100	(a) 1-20	(b) 21-50	(c) 51-100			(a) FIG NO.	(b) ITEM NO.
P 0 00102	5977-237-1582	BRUSH, MAIN BRUSH HOLDER T344 (36232)	EA		8	13	25	50	13	25	50	600	800	6	9
O 00103	5310-176-8137	NUT: brush lead attaching	EA		2	*	*	*	*	*	*	*	*	7	21
X2 O 00104		SCREW: exciter brush holder mtg S9225 (36232)	EA		4									7	18
H 00105	5305-984-5682	SCREW: main brush holder bracket	EA		1				*	*	*	*	*	8	6
X2 F 00106		SHIELD, INSULATING T2454 (36232)	EA		1									7	26
X2 O 00107		WASHER: exciter brush holder mtg T1095 (36232)	EA		4									7	19
H 00108	5310-012-0214	WASHER: main brush holder bracket	EA		1				*	*	*	*	*	3	5
00109		4405 - FRAME SUPPORT, HOUSING CARRIER													
P H 00110	3110-995-3226	BEARING, EXCITER END MRC309CFF (38443)	EA		1				*	*	2	10	10	7	12
P H 00111	3110-540-4606	BEARING, GENERATOR END 310CFFQ6B7MILL7711 (38443)	EA		1				*	*	2	10	10	8	4
X2 H 00112		BOLT: generator end dust cap M35291-46 (96906)	EA		4									8	16
X2 O 00113		BRACKET, EXCITER COVER S6848-2 (36232)	EA		1									7	4
X2 H 00114		BRACKET, EXCITER END	EA		1									7	14
X2 H 00115		BACK, GENERATOR END M5566-1 (36232)	EA		1									8	7
X2 H 00116		CAP, EXCITER END INNER DUST 5436 (36232)	EA		1									7	11
X2 H 00117		CAP, EXCITER END OUTER DUST S5435 (36232)	EA		1									7	16

(1) SMR CODE	(2) FEDERAL STOCK NUMBER	(3) DESCRIPTION REFERENCE NO. & MFR. CODE USABLE ON CODE	(4) UNIT OF ISSUE	(5) QTY INC IN UNIT PACK	(6) QTY INC IN UNIT	(7) 30-DAY DS MAINT ALLOWANCE			(8) 30-DAY GS MAINT ALLOWANCE			(9) 1-YR ALW PER 100 EQUIP CNTGCTY	(10) DEPOT MAINT ALW- PER 100 EQUIP	(11) ILLUS- TRATION	
						(a) 1-20	(b) 21-50	(c) 51-100	(a) 1-20	(b) 21-50	(c) 51-100			(a) FIG NO.	(b) ITEM NO.
X2 H 00118		CAP, GENERATOR END INNER DUST S5961 (36232)	EA		1									8	2
X2 H 00119		CAP, GENERATOR END INNER DUST S5962 (36232)	EA		1									8	14
X2 O 00120		COVER, EXCITER END M7393 (36232)	EA		1									7	3
X2 O 00121		COVER, FRAME M4165A1 (36232)	EA		1									12	11
X2 O 00122		COVER, GENERATOR END BRACKET M4129 (36232)	EA		1									8	10
X2 D 00123		FRAME ASSEMBLY, GENERATOR M6062 (36232)	EA		1									5	3
X1 00124		FRAME, MOTOR STATOR (Component of STATOR ASSEMBLY, Stock No> 6105-989-0531, See Group 4402)	EA		1									12	2
P H 00125	5330-995-1913	GASKET, EXCITER END DUST CAP T3633-2 (36232)	EA		2				2	2	4	50	100	7	13
P H 00126	3431-800-0240	GASKET, GENERATOR END DUST COVER T3633-11 (36232)	EA		2				2	2	4	50	200	8	3
O 00127	5310-013-1395	NUT: end bracket cover	EA		2	*	*	*	*	*	*	*	*	8	22
O 00128	5310-013-1395	NUT: frame cover	EA		2	*	*	*	*	*	*	*	*	12	13
X2 O 00129	4730-044-4569	PLUG: exciter end outer dust cover	EA		1									7	15
X2 O 00130	4730-044-4569	PLUG: generator end outer dust cover	EA		1									8	15
O 00131	5305-988-9265	SCREW: end bracket, cover	EA		2	*	*	*	*	*	*	*	*	8	11
H 00132	5305-052-1769	SCREW: exciter bracket mtg	EA		4				*	*	*	*	*	7	28
O 00133	5305-052-6921	SCREW: exciter end cover mtg	EA		2	*	*	*	*	*	*	*	*	7	1
H 00134	5305-071-2235	SCREW: exciter end dust cap	EA		2				*	*	*	*	*	7	17

(1) SMR CODE	(2) FEDERAL STOCK NUMBER	(3) DESCRIPTION REFERENCE NO. & MFR. CODE USABLE ON CODE	(4) UNIT OF ISSUE	(5) QTY INC IN UNIT PACK	(6) QTY INC IN UNIT	(7) 30-DAY DS MAINT ALLOWANCE			(8) 30-DAY GS MAINT ALLOWANCE			(9) 1-YR ALW PER 100 EQUIP CNTGCY	(10) DEPOT MAINT ALW- PER 100 EQUIP	(11) ILLUS- TRATION	
						(a) 1-20	(b) 21-50	(c) 51-100	(a) 1-20	(b) 21-50	(c) 51-100			(a) FIG NO.	(b) ITEM NO.
0 00135 H 00136 O 00137 00138	5305-988-9265	SCREW: frame cover	EA		2	*	*	*	*	*	*	*	*	12	12
	5305-782-9494	SCREW: generator end bracket mtg	EA		4				*	*	*	*	*	8	19
	5310-147-2065	WASHER: exciter end cover mtg	EA		1	*	*	*	*	*	*	*	*	7	2
		4406 - VENTILATING, COOLING SYSTEM													
X2 O 00139		BLOWER L2944-2 (36232)	EA		1									8	12
X2 O 00140		GUARD, FAN S519 (36232)	EA		1									8	8
X2 O 00141		NUT: blower T3107 (36232)	EA		1									8	21
X2 O 00142		RING, SNAP T10210-1 (36232)	EA		1									8	13
O 00143 X2 O 00144	5305-965-7306	SCREW: fan guard	EA		3	*	*	*	*	*	*	*	*	8	9
		WASHER: blower T3110 (36232)	EA		1									8	20
		4407 - CONTROL PANELS, HOUSING													
X2 F 00146		BOX, CONTROL L2295A (36232)	EA		1									10	10
O 00147	5997-296-6086	CLAMP, CABLE, BULKHEAD 15234 (03743)	EA		1									9	5
O 00148	5340-598-8062	CLAMP, LOOP MS21919G4 (96906)	EA		1									10	34
P 0 00149	5935-929-0301	CONNECTOR, RECEPTACLE 7210 (74545)	EA		1	*	*	*	*	*	*	5	5	10	9
O 00150 X2 O 00151	5305-889-3002	SCREW: receptacle wire attaching	EA		2	*	*	*	*	*	*	*	*	10	30
		COVER CONTROL BOX M5939 (36232)	EA		1									10	2

(1) SMR CODE	(2) FEDERAL STOCK NUMBER	(3) DESCRIPTION REFERENCE NO. & MFR. CODE USABLE ON CODE		(4) UNIT OF ISSUE	(5) QTY INC IN UNIT PACK	(6) QTY INC IN UNIT	(7) 30-DAY DS MAINT ALLOWANCE			(8) 30-DAY GS MAINT ALLOWANCE			(9) 1-YR ALW PER 100 EQUIP CNTGCTY	(10) DEPOT MAINT ALW- PER 100 EQUIP	(11) ILLUS- TRATION	
							(a) 1-20	(b) 21-50	(c) 51-100	(a) 1-20	(b) 21-50	(c) 51-100			(a) FIG NO.	(b) ITEM NO.
X2 O 00152		DOOR, CONTROL BOX S6650 (36232)		EA		1									9	1
X2 O 00153		INSULATOR, CONNECTING STRAP T3846 (36232)		EA		1									11	31
X2 O 00154		INSULATOR, CONNECTING STRAP T7843 (36232)		EA		1									11	18
X2 O 00155		LEAD, CIRCUIT BREAKER TO STARTER ASSEMBLY LA2175 (36024)		EA		3									9	10
M F 00156		LEAD, INTERLOCK SWITCH TO THERMOSTAT LEAD MANUFACTURE FROM:		EA		1									12	7
X2 F 00157		TERMINAL B87G (59730)		EA		2										
P F 00158	6145-195-5608	WIRE, ELECTRICAL		FT					SEE	GRP	9501					
M O 00159		LEAD, LOCAL-REMOTE SWITCH MANUFACTURE FROM:		EA		1									10	5
X2 O 00160	5940-155-9686	TERMINAL C36 (59730)		EA		2										
P O 00161	6145-578-7521	WIRE, ELECTRICAL (3 in. required)		FT					SEE	GRP	9501					
M O 00162		LEAD, LOCAL-REMOTE SWITCH TO RECEPTACLE MANUFACTURE FROM:		EA		1									10	6
X2 O 00163	5940-177-7911	TERMINAL B86G (59730)		EA		1										
X2 O 00164		TERMINAL B87G (59730)		EA		1										
P O 00165	6145-195-5608	WIRE, ELECTRICAL (6 in. required)		FT					SEE	GRP	9501					
M O 00166		LEAD, LOCAL-REMOTE SWITCH RECEPTACLE MANUFACTURE FROM:		EA		1									10	31
X2 O 00167	5940-177-7910	TERMINAL B86G (59730)		EA		1										

(1) SMR CODE	(2) FEDERAL STOCK NUMBER	(3) DESCRIPTION REFERENCE NO. & MFR. CODE USABLE ON CODE	(4) UNIT OF ISSUE	(5) QTY INC IN UNIT PACK	(6) QTY INC IN UNIT	(7) 30-DAY DS MAINT ALLOWANCE			(8) 30-DAY GS MAINT ALLOWANCE			(9) 1-YR ALW PER 100 EQUIP CNTGCTY	(10) DEPOT MAINT ALW- PER 100 EQUIP	(11) ILLUS- TRATION		
						(a) 1-20	(b) 21-50	(c) 51-100	(a) 1-20	(b) 21-50	(c) 51-100			(a) FIG NO.	(b) ITEM NO.	
X2 O 00168		TERMINAL B87G (59730)	EA		1											
P O 00169 M O 00170	6145-195-5608	WIRE, ELECTRICAL (7 in. required)	FT						SEE	GRP	9501					
X2 O 00171	5940-177-7910	TERMINAL B86G (59730)	EA		1										10	8
X2 O 00172		TERMINAL B87G (59730)	EA		1											
P O 00173 M O 00174	6145-195-5608	WIRE ELECTRICAL	FT						SEE	GRP	9501					
		LEAD, RESISTOR TO POLARITY SWITCH S6751-4 (36232) MANUFACTURE FROM:	EA		1										11	11
X2 O 00175	5940-020-0005	TERMINAL	EA		2										11	12
P O 00176 M O 00177	6145-578-7521	WIRE, ELECTRICAL (9 in. required)	FT						SEE	GRP	9501					
		LEAD, RESISTOR TO POLARITY SWITCH S6751-3 (36232) MANUFACTURE FROM:	EA		1										11	13
X2 O 00178	5940-177-7910	TERMINAL B86G (59730)	EA		2										11	12
P O 00179 M O 00180	6145-195-5608	WIRE, ELECTRICAL	FT						SEE	GRP	9501					
		LEAD, RHEOSTAT TO LOCAL-REMOTE SWITCH MANUFACTURE FROM:	EA		1										10	23
X2 O 00181	5940-177-7910	TERMINAL B86G (59730)	EA		1											
X2 O 00182		TERMINAL B87G (59730)	EA		1											
P O 00183	6145-195-5608	WIRE, ELECTRICAL (9 in. required)	FT						SEE	GRP	9501					

(1) SMR CODE	(2) FEDERAL STOCK NUMBER	(3) DESCRIPTION REFERENCE NO. & MFR. CODE USABLE ON CODE		(4) UNIT OF ISSUE	(5) QTY INC IN UNIT PACK	(6) QTY INC IN UNIT	(7) 30-DAY DS MAINT ALLOWANCE			(8) 30-DAY GS MAINT ALLOWANCE			(9) 1-YR ALW PER 100 EQUIP CNTGCTY	(10) DEPOT MAINT ALW- PER 100 EQUIP	(11) ILLUS- TRATION	
							(a) 1-20	(b) 21-50	(c) 51-100	(a) 1-20	(b) 21-50	(c) 51-100			(a) FIG NO.	(b) ITEM NO.
M O 00184		LEAD, RHEOSTAT TO RESISTOR MANUFACTURE FROM:		EA		1									10	24
X2 O 00185	5940-177-7910	TERMINAL B86G (59730)														
P O 00186	5145-195-5608	WIRE, ELECTRICAL (18 in. required)		FT					SEE	GRP	9501					
M F 00187		LEAD, START-STOP SWITCH TO STARTER S6751-2 (36232) MANUFACTURE FROM:		EA		1									9	12
X2 F 00188		TERMINAL B87G (59730)		EA		1										
X2 F 00189	5940-636-7114	TERMINAL B87G (59730)		EA		1										
P F 00190	6145-195-5608	WIRE, ELECTRICAL (18 in. required)		FT					SEE	GRP	9501					
M O 00191		LEAD, START-STOP SWITCH TO STARTER, STATIONARY CONTACT S6751-1 (36232) MANUFACTURE FROM:		EA		1									9	14
X2 O 00192	5940-636-7114	TERMINAL B85G (59730)		EA		1										
X2 O 00193	5940-050-6209	TERMINAL B71G (59730)		EA		1										
P O 00194	6145-195-5608	WIRE, ELECTRICAL (17 in. required)		FT					SEE	GRP	9501					
M F 00195		LEAD, START-STOP SWITCH TO RHEOSTAT LEAD MANUFACTURE FROM:		EA		1									12	9
X2 F 00196	5940-636-7114	TERMINAL B85G (59730)		EA		1										
X2 F 00197		TERMINAL B87G (59730)		EA		1										
P F 00198	6145-195-5608	WIRE, ELECTRICAL (3 ft, 2 in. required)		FT					SEE	GRP	9501					

(1) SMR CODE	(2) FEDERAL STOCK NUMBER	(3) DESCRIPTION REFERENCE NO. & MFR. CODE USABLE ON CODE		(4) UNIT OF ISSUE	(5) QTY INC IN UNIT PACK	(6) QTY INC IN UNIT	(7) 30-DAY DS MAINT ALLOWANCE			(8) 30-DAY GS MAINT ALLOWANCE			(9) 1-YR ALW PER 100 EQUIP CNTGCTY	(10) DEPOT MAINT ALW- PER 100 EQUIP	(11) ILLUS- TRATION	
							(a) 1-20	(b) 21-50	(c) 51-100	(a) 1-20	(b) 21-50	(c) 51-100			(a) FIG NO.	(b) ITEM NO.
M O 00199		LEAD, VOLT-AMPMETER TO ELECTRODE STRAP SHUNT MANUFACTURE FROM:		EA		1									10	40
X2 O 00200	5940-505-5678	TERMINAL 32994 (04618)		EA	1											
X2 O 00201	5940-155-9686	TERMINAL C36 (59730)		EA	1											
P O 00202	6145-578-7521	WIRE, ELECTRICAL		FT					SEE	GRP	9501					
M O 00203		LEAD, VOLT-AMPMETER TO ELECTRODE STRAP SHUNT MANUFACTURE FROM:		EA		1									10	41
X2 O 00204	5940-504-5878	TERMINAL 32994 (04618)		EA		1										
X2 O 00205	5940-155-9686	TERMINAL C36 (59730)		EA		1										
P O 00206	6145-578-7521	WIRE, ELECTRICAL (6 in. required)		FT					SEE	GRP	9501					
M O 00207		LEAD, VOLT-AMPMETER TO OUTPUT STUD MANUFACTURE FROM:		EA		1									10	36
X2 O 00208	5940-504-5878	TERMINAL 32994 (04618)		EA		1										
X2 O 00209	5940-754-5301	TERMINAL 35135 (04618)		EA		1										
P O 00210	6145-578-7521	WIRE, ELECTRICAL (11 in. required)		FT					SEE	GRP	9501					
O 00211	5310-988-5844	NUT: electrode and output stud		EA		2	*	*	*	*	*	*	*	*	11	21
O 00212	5310-822-0984	NUT: electrode stud		EA		1	*	*	*	*	*	*	*	*	14	4
O 00213	5310-176-8137	NUT: loop clamp and receptacle mtg, local-remote switch wire attaching		EA		3	*	*	*	*	*	*	*	*	10	3
O 00214	5310-685-1429	NUT: output and electrode studs		EA		2	*	*	*	*	*	*	*	*	11	36
O 00215	5310-822-0984	NUT: output stud		EA		1	*	*	*	*	*	*	*	*	14	4

(1) SMR CODE	(2) FEDERAL STOCK NUMBER	(3) DESCRIPTION REFERENCE NO. & MFR. CODE USABLE ON CODE	(4) UNIT OF ISSUE	(5) QTY INC IN UNIT PACK	(6) QTY INC IN UNIT	(7) 30-DAY DS MAINT ALLOWANCE			(8) 30-DAY GS MAINT ALLOWANCE			(9) 1-YR ALW PER 100 EQUIP CNTG	(10) DEPOT MAINT ALW- PER 100 EQUIP	(11) ILLUS- TRATION	
						(a) 1-20	(b) 21-50	(c) 51-100	(a) 1-20	(b) 21-50	(c) 51-100			(a) FIG NO.	(b) ITEM NO.
C 00216	5310-685-1429	NUT: reactor strap to electrode stud	EA		1	*	*	*	*	*	*	*	*	14	16
F 00217	5310-685-1429	NUT: rear control box mtg stud	EA		1	*	*	*	*	*	*	*	*	11	17
O 00218	5310-176-8137	NUT: shunt wire attaching	EA		2	*	*	*	*	*	*	*	*	11	5
F 00219	5310-176-8137	NUT: thermostat leads attaching	EA		2	*	*	*	*	*	*	*	*	12	6
O 00220	5310-275-1706	NUT: volt-ampmeter mtg	EA		3	*	*	*	*	*	*	*	*	10	29
O 00221	5310-059-4264	NUT: volt-ampmeter wire attaching	EA		3	*	*	*	*	*	*	*	*	10	38
X2 F 00222		PANEL, CONTROL BOX S6509 (36232)	EA		1									11	8
X2 O 00223		ROD, CONTROL BOX DOOR	EA		1									9	4
F 00224	5305-269-3209	SCREW: control box mtg, front and rear	EA		2	*	*	*	*	*	*	*	*	11	34
O 00225	5305-840-6694	SCREW: cover attaching	EA		6	*	*	*	*	*	*	*	*	10	1
O 00226	5305-908-1721	SCREW: electrical lead attaching to stationary contacts	EA		3	*	*	*	*	*	*	*	*	9	8
O 00227	5305-988-1721	SCREW: lead attaching to stationary contact	EA		1	*	*	*	*	*	*	*	*	9	15
O 00228	5305-042-0478	SCREW: local-remote switch wire attaching and loop clamp mtg	EA		5	*	*	*	*	*	*	*	*	10	7
O 00229	5305-010-0157	SCREW: output stud strap attaching	EA		1	*	*	*	*	*	*	*	*	11	33
F 00230	5305-010-7394	SCREW: panel mtg	EA		4	*	*	*	*	*	*	*	*	11	15
O 00231	5305044-4153	SCREW: reactor strap to electrode strap	EA		1	*	*	*	*	*	*	*	*	14	15
O 00232	5305-60b8309	SCREW: receptacle mtg	EA		2	*	*	*	*	*	*	*	*	10	35
O 00233	5305-608-8307	SCREW: shunt wire attaching	EA		2	*	*	*	*	*	*	*	*	11	37
O 00234	5305-836-8476	SCREW: tapping, output stud t strap insulator	EA		1	*	*	*	*	*	*	*	*	11	30
O 00235	5305-608-8307	SCREW: thermostat leads attaching	EA		2	*	*	*	*	*	*	*	*	12	8

(1) SMR CODE	(2) FEDERAL STOCK NUMBER	(3) DESCRIPTION REFERENCE NO. & MFR. CODE	(4) UNIT OF ISSUE	(5) QTY INC IN UNIT PACK	(6) QTY INC IN UNIT	(7) 30-DAY DS MAINT ALLOWANCE			(8) 30-DAY GS MAINT ALLOWANCE			(9) 1-YR ALW PER 100 EQUIP CNTGCTY	(10) DEPOT MAINT ALW- PER 100 EQUIP	(11) ILLUS- TRATION	
						(a) 1-20	(b) 21-50	(c) 51-100	(a) 1-20	(b) 21-50	(c) 51-100			(a) FIG NO.	(b) ITEM NO.
O 00236	5305-637-1125	SCREW: volt-ampmeter mtg	EA		3	*	*	*	*	*	*	*		10	16
P O	6625-954-2873	SHUNT S6602-2 (36232)	EA		1	*	*	2	*	*	2	10	10		
X2 O 00238		STRAP CONNECTION T8141 (36232)	EA		1									11	19
X2 O 00239		STRAP CONNECTION T7845 (36232)	EA		1									11	29
X2 O 00240	5307-934-7541	STUD: electrode output T6931-2 (36232)	EA		1				SEE	GRP	9501			11	20
X2 O 00241		STUD ASSEMBLY, OUTPUT T8230-1 (36232)	EA		1									11	
X2 O 00242	6115-930-5837	BUSHING, INSULATING T5411 (36232)	EA		1				SEE	GRP	9901			14	1
X2 O 00243	5307-984-7541	STUD T6931-2 (36232)	EA		1				SEE	GRP	9901			14	20
X2 O 00244		WASHER: insulating 2719 (36232)	EA		1				SEE	GRP	9901			14	2
O 00245	5310-012-0384	WASHER: output stud	EA		1	*	*	*	*	*	*	*	*	14	3
X2 O 00246	5975-027-4581	TYRAP, ELECTRICAL LEADS TY25 (59730)	EA		3									9	9
P O 00247	6625-954-2709	VOLT-AMPMETER S1934 (36232)	EA		1	*	*	*	*	*	*	5	5	10	17
F 00248	5310-011-5549	WASHER: control box mtg, front and rear	EA		2	*	*	*	*	*	*	*	*	11	33
F 00249	5310-187-2390	WASHER: control box mtg, rear	EA		1	*	*	*	*	*	*	*	*	11	32
O 00250	5310-012-0334	WASHER: electrode stud	EA		1	*	*	*	*	*	*	*	*	14	3
X2 O 00251		WASHER: electrode stud T2719 (36232)	EA		1				SEE	GRP	9901			14	2

(1) SMR CODE	(2) FEDERAL STOCK NUMBER	(3) DESCRIPTION REFERENCE NO. & MFR. CODE USABLE ON CODE		(4) UNIT OF ISSUE	(5) QTY INC IN UNIT PACK	(6) QTY INC IN UNIT	(7) 30-DAY DS MAINT ALLOWANCE			(8) 30-DAY GS MAINT ALLOWANCE			(9) 1-YR ALW PER 100 EQUIP CNTGCTY	(10) DEPOT MAINT ALW- PER 100 EQUIP	(11) ILLUS- TRATION	
							(a) 1-20	(b) 21-50	(c) 51-100	(a) 1-20	(b) 21-50	(c) 51-100			(a) FIG NO.	(b) ITEM NO.
X2 O 00252		WASHER: electrode stud T845 (36232)		EA		1				SEE	GRP	9901			14	5
O 00253	5310-167-0834	WASHER: loop clamp mtg		EA		1	*	*	*	*	*	*	*	*	10	26
O 00254	5310-879-6493	WASHER: output and electrode studs		EA		2	*	*	*	*	*	*	*	*	11	35
F 00255	5310-010-3323	WASHER: rear control box mtg stud		EA		1	*	*	*	*	*	*	*	*	11	16
O 00256	5310-010-3337	WASHER: volt-ampmeter mtg		EA		3	*	*	*	*	*	*	*	*	10	27
O 00257	5310-010-6495	WASHER: volt-ampmeter mtg		EA		3	*	*	*	*	*	*	*	*	10	28
O 00258	5310-205-7782	WASHER: volt-ampmeter wire attaching		EA		3	*	*	*	*	*	*	*	*	10	39
00259		4409 - PROTECTIVE DEVICES, ELECTRICAL														
H 00260	5310-584-5005	NUT: current coil leads attaching		EA		2				*	*	*	*	*	12	3
H 00261	5305-988-1723	SCREW: current coil leads attaching		EA		2				*	*	*	*	*	12	4
P H 00262	5945-954-4214	THERMOSTAT ASSEMBLY L2832-13 (36232)		EA		1				*	*	*	5	5	12	5
X1 00263		CLAMP, THERMOSTAT ASSEMBLY HOLD DOWN		EA		1									12	10
00264		4410 - SWITCHING, TIMING AND SEEP CONTROL														
P O 00265	5925-954-4211	CIRCUIT BREAKER 20E1525 (01411)		EA		1	*	*	2	*	*	2	10	10	9	11
X2 O 00266		CLIP, POLARITY SWITCH ROD S7297-1 (36232)		EA		1									10	32
X2 O 00267		HANDLE, POLARITY SWITCH T5418 (36232)		EA		1									10	12
O 00268	5310-176-8137	NUT: local-remote switch wire attaching		EA		4	*	*	*	*	*	*	*	*	10	3
O 00269	5310-176-8137	NUT: polarity switch mtg		EA		2	*	*	*	*	*	*	*	*	11	5
O 00270	5305-042-0479	NUT: start-stop switch mtg		EA		2	*	*	*	*	*	*	*	*	9	6

(1) SMR CODE	(2) FEDERAL STOCK NUMBER	(3) DESCRIPTION REFERENCE NO. & MFR. CODE USABLE ON CODE	(4) UNIT OF ISSUE	(5) QTY INC IN UNIT PACK	(6) QTY INC IN UNIT	(7) 30-DAY DS MAINT ALLOWANCE			(8) 30-DAY GS MAINT ALLOWANCE			(9) 1-YR ALW PER 100 EQUIP CNTG	(10) DEPOT MAINT ALW- PER 100 EQUIP	(11) ILLUS- TRATION		
						(a) 1-20	(b) 21-50	(c) 51-100	(a) 1-20	(b) 21-50	(c) 51-100			(a) FIG NO.	(b) ITEM NO.	
F 00271 X2 O 00272	5305-042-0479	NUT: starter mtg	EA		1	*	*	*	*	*	*	*	*	9	6	
		PIN: polarity switch mtg 3-32X3-4 (00287)	EA		1										10	11
X2 O 00273		ROD , POLARITY SWITCH	EA		1										11	6
O 00274	5305-151-1229	SCREW: circuit breaker mtg	EA		4	*	*	*	*	*	*	*	*	9	3	
O 00275	5305-059-8248	SCREW: local-remote switch mtg	EA		2	*	*	*	*	*	*	*	*	10	37	
O 00276	5305-042-0478	SCREW: local-remote switch wire attaching	EA		4	*	*	*	*	*	*	*	*	10	7	
O 00277	5305-984-6212	SCREW: polarity switch mtg	EA		2	*	*	*	*	*	*	*	*	11	1	
O 00278	5305-984-6212	SCREW: start-stop switch mtg	EA		2	*	*	*	*	*	*	*	*	9	2	
O 00279	5305-042-0479	SCREW: starter assembly mtg	EA		1	*	*	*	*	*	*	*	*	9	16	
X2 F 00280		STARTER ASSEMBLY L2296 (36232)	EA		1										9	7
X2 F 00281		ARM, CONTACT S2703 (36232)	EA		3									13	20	
X2 F 00282		BARRIER M5382 (36232)	EA		1									13	24	
X2 F 00283		BLOCK, CONTACT T3811-1 (36232)	EA		1									13	38	
X2 F 00284		BLOCK, CONTACT S2709 (36232)	EA		1									13	10	
X2 F 00285		BLOCK, CONTACT S6514 (36232)	EA		1									13	2	
X2 F 00286	5305-225-9081	BOLT: electrical lead attaching to contact block	EA		3	*	*	*	*	*	*	*	*	13	29	
X2 F 00287		BUSHING, SHAFT INSULATOR T3817 (36232)	EA		2									13	27	
X2 F 00288		CLAMP, ARM T3825 (36232)	EA		3									13	35	

(1) SMR CODE	(2) FEDERAL STOCK NUMBER	(3) DESCRIPTION REFERENCE NO. & MFR. CODE USABLE ON CODE		(4) UNIT OF ISSUE	(5) QTY INC IN UNIT PACK	(6) QTY INC IN UNIT	(7) 30-DAY DS MAINT ALLOWANCE			(8) 30-DAY GS MAINT ALLOWANCE			(9) 1-YR ALW PER 100 EQUIP CNTGCTY	(10) DEPOT MAINT ALW- PER 100 EQUIP	(11) ILLUS- TRATION	
							(a) 1-20	(b) 21-50	(c) 51-100	(a) 1-20	(b) 21-50	(c) 51-100			(a) FIG NO.	(b) ITEM NO.
X2 F 00289		CLAMP, COIL T6082 (36232)		EA		1									13	8
X2 F 00290		CLIP, SPRING S7297 (36232)		EA		2									13	15
P F 00291	5950-960-2787	COIL, HOLD-IN XL3-2 (36232)	:	EA		1	*	*	*	*	*	*	5	5	13	14
P F 00292	3431-954-2874	CONTACT, MOVING T3798 (36232)		EA		3	2	2	2	2	2	2	27	30	13	45
P F 00293	3431-954-2375	CONTACT, STATIONARY T7711 (36232)		EA		3	2	2	2	2	2	2	27	30	13	3
X2 F 00294		HOLDER, CONTACT S4775 (36232)		EA		1									13	17
X2 F 00295		INSULATION, SHAFT T5803-3 (36232)		EA		1									13	30
X2 F 00296		INSULATOR, INTERLOCK BLOCK T5 39/ (36232)		EA		1									13	18
X2 F 00297		INSULATOR, HOLD-IN COIL T4453 (36232)		EA		1									13	9
X2 F 00298		INTERLOCK, ASSEMBLY T5736 (36232)		EA		1									13	
X2 F 00299		BLOCK, INTERLOCK T3803 (36232)		EA		1									13	40
X2 F 00300		PLUNGER, INTERLOCK BLOCK T3804 (36232)		EA		1									13	19
X2 F 00301		SPRING T3805 (36232)		EA		1									13	42
X2 F 00302		WASHER T7873 (36232)		EA		1									13	43
X2 F 00303		LEAD, MOUNTING CONTACT TO CONTACT BLOCK T3797 (36232)		EA		3									13	4

(1) SMR CODE	(2) FEDERAL STOCK NUMBER	(3) DESCRIPTION REFERENCE NO. & MFR. CODE USABLE ON CODE	(4) UNIT OF ISSUE	(5) QTY INC IN UNIT PACK	(6) QTY INC IN UNIT	(7) 30-DAY DS MAINT ALLOWANCE			(8) 30-DAY GS MAINT ALLOWANCE			(9) 1-YR ALW PER 100 EQUIP CNTGCTY	(10) DEPOT MAINT ALW- PER 100 EQUIP	(11) ILLUS- TRATION	
						(a) 1-20	(b) 21-50	(c) 51-100	(a) 1-20	(b) 21-50	(c) 51-100			(a) FIG NO.	(b) ITEM NO.
F 00304	5310-012-0361	NUT: contact block mtg to left and right panels and contact adjusting screw	EA		7	*	*	*	*	*	*	*	*	13	36
F 00305	5310-011-0633	NUT: contact block to right hand panel	EA		4	*	*	*	*	*	*	*	*	13	46
F 00306	5310-010-5316	NUT: electrical lead attaching to contact block	EA		3	*	*	*	*	*	*	*	*	13	13
X2 F 00307		NUT: electrical lead attaching to contact block AN335-5 (88044)	EA		3									13	6
X2 F 00308		PANEL, LEFT HAND S3982 (36232)	EA		1									13	5
X2 F 00309		PANEL, RIGHT HAND S3981 (36232)	EA		1									13	1
X2 F 00310		PIN, CONTACT ARM T3819 (36232)	EA		3									13	7
X2 F 00311		PIN, CONTACT BLOCK T4795 (36232)	EA		1									13	22
F 00312	5315-236-1359	PIN, SHAFT	EA		2	*	*	*	*	*	*	*	*	13	16
X2 F 00313		RETAINER, COIL T320 (30632)	EA		1									13	26
F 00514	5305-275-9838	SCREW: clamp to contact arm	EA		3	*	*	*	*	*	*	*	*	13	37
F 00315	5305-275-9837	SCREW: clamp to contact am	EA		3	*	*	*	*	*	*	*	*	13	34
F 00316	5305-988-1723	SCREW: contact arm spring	EA		3	*	*	*	*	*	*	*	*	13	33
F 09317	5305-984-6212	SCREW: contact block mtg to right and left hand panels	EA		4	*	*	*	*	*	*	*	*	13	23
F 00318	5305-011-0499	SCREW: contact block to right hand panel	EA		4	*	*	*	*	*	*	*	*	13	32
X2 F 00319		SCREW: electrical leads attaching to interlock block AN515R10-6 (88044)	EA		2									13	11
F 00320	5301-29A-7935	SCREW: electrical leads attaching to interlock block	EA		2	*	*	*	*	*	*	*	*	13	39

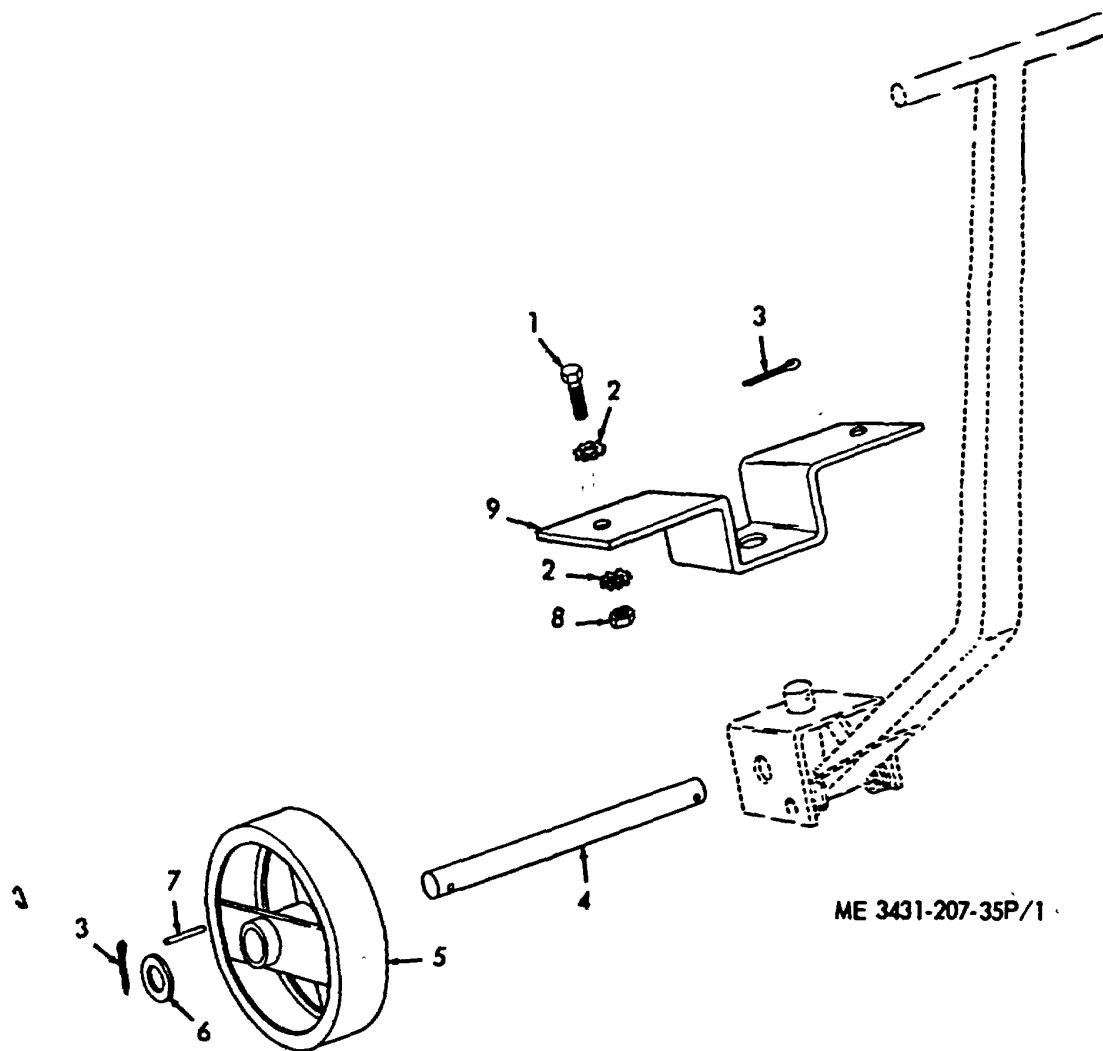
(1) SMR CODE	(2) FEDERAL STOCK NUMBER	(3) DESCRIPTION REFERENCE NO. & MFR. CODE USABLE ON CODE	(4) UNIT OF ISSUE	(5) QTY INC IN UNIT PACK	(6) QTY INC IN UNIT	(7) 30-DAY DS MAINT ALLOWANCE			(8) 30-DAY GS MAINT ALLOWANCE			(9) 1-YR ALW PER 100 EQUIP CNTGCTY	(10) DEPOT MAINT ALW- PER 100 EQUIP	(11) ILLUS- TRATION	
						(a)	(b)	(c)	(a)	(b)	(c)			(a)	(b)
						1-20	21-50	51-100	1-20	21-50	51-100			FIG NO.	ITEM NO.
F 00321	5305-988-1720	SCREW: holding coil lead attaching to stationary contact	EA		1	*	*	*	*	*	*	*	*	9	15
A F 00322		SCREW: interlock block mtg	EA		2									13	41
F 00323	5305-819-5368	SCREW: interlock block mtg	EA		2	*	*	*	*	*	*	*	*		
F 00324	5310-596-7691	WASHER: interlock block mtg	EA		2	*	*	*	*	*	*	*	*		
F 00325	5305-984-6210	SCREW: moving contact adjusting	EA		3	*	*	*	*	*	*	*	*	13	44
X2 F 00326		SHAFT S4771 (36232)	EA		1									13	25
X2 F 00327	3431-969-0523	SPRING, CONTACT ARM T4336 (36232)	EA		1									13	21
F 00328	5310-010-3319	WASHER: clamp to contact arm	EA		6	*	*	*	*	*	*	*	*	13	31
F 00329	5310-011-5545	WASHER: contact block to right hand panel and contact block to right hand and left panel	EA		8	*	*	*	*	*	*	*	*	13	12
F 00330	5310-514-6674	WASHER: electrical lead stationary contact mtg to contact block	EA		6	*	*	*	*	*	*	*	*	13	28
P O 00331	5930-960-2786	SWITCH, LOCAL-REMOTE CONTROL 9623 (74545)	EA		1	*	*	*	*	*	*	5	5	10	4
P O 00332	5930-961-1192	SWITCH, POLARITY M4941 (36232)	EA		1	*	*	*	*	*	*	5	5	11	2
O 00333	5305-059-8248	SCREW: polarity switch wire attaching	EA		6	*	*	*	*	*	*	*	*	11	27
X2 O 00334	3431-960-2716	SWITCH, START-STOP M6574A (36232)	EA		1									9	13
O 00335	5305-151-1229	SCREW: electrical lead attaching to start-stop switch	EA		1	*	*	*	*	*	*	*	*	9	17
O 00336	5310-045-3296	WASHER: polarity switch mtg	EA		2	*	*	*	*	*	*	*	*	11	4
O 00337	5310-167-0834	WASHER: polarity switch mtg	EA		2	*	*	*	*	*	*	*	*	11	3

(1) SMR CODE	(2) FEDERAL STOCK NUMBER	(3) DESCRIPTION REFERENCE NO. & MFR. CODE USABLE ON CODE	(4) UNIT OF ISSUE	(5) QTY INC IN UNIT PACK	(6) QTY INC IN UNIT	(7) 30-DAY DS MAINT ALLOWANCE			(8) 30-DAY GS MAINT ALLOWANCE			(9) 1-YR ALW PER 100 EQUIP CNTGNCY	(10) DEPOT MAINT ALW- PER 100 EQUIP	(11) ILLUS- TRATION		
						(a) 1-20	(b) 21-50	(c) 51-100	(a) 1-20	(b) 21-50	(c) 51-100			(a) FIG NO.	(b) ITEM NO.	
00338		4411 - RESISTOR COMPONENTS														
X2 O 00339		HANDLE, RHEOSTAT S8158 (36232)	EA		1				SEE	GRP	9901			10	20	
O 00340	5310-639-1098	NUT: rheostat wire attaching	EA		2	*	*	*	*	*	*	*	*	10	25	
O 00341	5310-176-8137	NUT: resistor mtg	EA		1	*	*	*	*	*	*	*	*	11	5	
O 00342	5310-616-6949	NUT: resistor wire attaching	EA		2	*	*	*	*	*	*	*	*	11	14	
X O 00343		PLATE, DIAL M10088 (36232)	EA		1				SEE	GRP	9901			10	21	
P O 00344	5905-752-7467	RESISTOR, FIX FIELD WIRE WOUND T8280 (36232)	EA		1	*	2	2	*	2	2	20	20	11	9	
X1 00345		WASHER: resistor mtg	EA		1									11	10	
P O 00346	5905-718-6063	RHEOSTAT NS0906C (36232)	EA		1				SEE	GRP	9901			10	22	
O 00347	5305-608-8307	SCREW: dial plate and rheostat mtg	EA		2	*	*	*	*	*	*	*	*	10	18	
O 00348	5305-817-5443	SCREW: resistor mtg	EA		1	*	*	*	*	*	*	*	*	11	7	
O 00349	3431-994-9301	SETSCREW: rheostat handle mtg AN565D1024H3 (88044)	EA		1									10	19	
00350		4412 - TRANSFORMER COMPONENTS														
X2 F 00351	5977-995-3230	BRUSH HOLDER ASSEMBLY, REACTOR M6277 (36232)	EA		1									14		
P F 00352	3431-802-6841	ARM, CONTACT T7494 (36232)	EA		3	*	2	2	*	2	2	15	15	14	9	
F 00353	5306-225-8499	BOLT: brush holder	EA		2	*	*	*	*	*	*	*	*	14	12	
X2 F 00354	5977-088-7133	BRUSH HOLDER M6264 (36232)	EA		1									14	11	
X2 F 00355		CLIP, SPRING S7297 (36232)	EA		1									14	17	

(1) SMR CODE	(2) FEDERAL STOCK NUMBER	(3) DESCRIPTION REFERENCE NO. & MFR. CODE USABLE ON CODE	(4) UNIT OF ISSUE	(5) QTY INC IN UNIT PACK	(6) QTY INC IN UNIT	(7) 30-DAY DS MAINT ALLOWANCE			(8) 30-DAY GS MAINT ALLOWANCE			(9) 1-YR ALW PER 100 EQUIP CNTGCTY	(10) DEPOT MAINT ALW- PER 100 EQUIP	(11) ILLUS- TRATION	
						(a) 1-20	(b) 21-50	(c) 51-100	(a) 1-20	(b) 21-50	(c) 51-100			(a) FIG NO.	(b) ITEM NO.
F 00356	5305-639-4863	SCREW: contact arm	EA		3	*	*	*	*	*	*	*		14	7
X2 F 00357		SHAFT, BRUSH HOLDER T8218 (36232)	EA		1										14
P F 00358	3431-802-6844	SPRING, CONTACT ARM T6985 (36232)	EA		3	2	2	2	2	2	2	7	30	14	10
X2 F 00359	5340-980-5834	SPRING, SHAFT T8236 (36232)	EA		1									14	18
X2 F 00360		STUD AND BRACKET ASSEMBLY T7852 (36232)	EA		1										11
X2 F 00361	6115-980-5837	BRACKET T7850 (36232)	EA		1									11	22
X2 F 00362		BUSHING, INSULATING T5411 (36232)	EA		1				SEE	GRP	9901			11	23
X2 F 00363		NUT: reactor stud T10114 (36232)	EA		2									11	26
X2 F 00364		STUD, RECTOR T9107 (36232)	EA		1									14	6
X2 F 00365		WASHER : brush holder stud 9262-1 (36232)	EA		1									11	25
X2 F 00366		WASHER: insulating T719 (36232)	EA		1				SEE	GRP	9901			14	2
X2 F 00367		WASHER: insulating T2719 (36232)	EA		1				SEE	GRP	9901			11	24
X2 F 00368		WASHER: reactor stud T845 (36232)	EA		1				SEE	GRP	9901			14	5
X2 F 00369		TUBE, INSULATION T8219 (36232)	EA		1									14	21
F 00370		5310-043-2226	WASHER: contact arm	EA		3	*	*	*	*	*	*	*	*	14

(1) SMR CODE	(2) FEDERAL STOCK NUMBER	(3) DESCRIPTION REFERENCE NO. & MFR. CODE USABLE ON CODE		(4) UNIT OF ISSUE	(5) QTY INC IN UNIT PACK	(6) QTY INC IN UNIT	(7) 30-DAY DS MAINT ALLOWANCE			(8) 30-DAY GS MAINT ALLOWANCE			(9) 1-YR ALW PER 100 EQUIP CNTGCTY	(10) DEPOT MAINT ALW- PER 100 EQUIP	(11) ILLUS- TRATION	
							(a)	(b)	(c)	(a)	(b)	(c)			(a)	(b)
							1-20	21-50	51-100	1-20	21-50	51-100			FIG NO.	ITEM NO.
X2 F 00371		WASHER: shaft T6367 (36232)		EA		2									14	19
X2 F 00372		DIAL, PLATE CURRENT L4024 (36232)		EA		1									10	13
X2 O 00373		HANDLE, REACTOR S7995-3 (36232)		EA		1									10	15
P F 00374	5950-961-1209	REACTOR L2036C (36232)		EA		1	*	*	*	*	*	*	5	5	14	13
F 00375	5305-010-7394	SCREW: bracket mtg		EA		2	*	*	*	*	*	*	*	*		
F 00376	5305-608-8308	SCREW reactor mtg		EA		6	*	*	*	*	*	*	*	*	14	14
X2 F 00377		SETSCREW: reactor handle AN565E416H6 (88044)		EA		1									10	14
00378		GROUP 95 - GENERAL USE STANDARDIZED PARTS														
00379		9501 - BULK MATERIAL														
P O 00380	6145-807-8257	CABLE, POWER ELECTRICAL (1)		FT			*	*	*	*	*	*	100	100		
P O 00381	6145-195-5608	WIRE, ELECTRICAL (2)		FT			*	*	*	*	*	*	13	13		
P O 00382	6145-578-7521	WIRE, ELECTRICAL (3)		FT			*	*	*	*	*	*	19	19		
00383		GROUP 99 - PARTS PECULIAR														
00384		9901 - MULTI-LISTED PARTS														
X2 O 00385	6115-980-5837	BUSHING T5411 (36232)		EA		2										
X2 O 00386		HANDLE S8158 (36232)		EA		2										
X2 O 00387		PLATE M10088 (36232)		EA		2										
X2 O 00388		RETAINER S9262-34 (3622)		EA		4										

(1) SMR CODE	(2) FEDERAL STOCK NUMBER	(3) DESCRIPTION REFERENCE NO. & MFR. CODE USABLE ON CODE		(4) UNIT OF ISSUE	(5) QTY INC IN UNIT PACK	(6) QTY INC IN UNIT	(7) 30-DAY DS MAINT ALLOWANCE			(8) 30-DAY GS MAINT ALLOWANCE			(9) 1-YR ALW PER 100 EQUIP CNTGCTY	(10) DEPOT MAINT ALW- PER 100 EQUIP	(11) ILLUS- TRATION		
							(a) 1-20	(b) 21-50	(c) 51-100	(a) 1-20	(b) 21-50	(c) 51-100			(a) FIG NO.	(b) ITEM NO.	
P O 00389	595-718-6063	RHEOSTAT M5090C (36232)		EA		2	*	2	2	*	2	2	20	20			
X2 O 00390		ROLLER T7208 (36232)		EA		68											
X2 O 00391	5307-984-7541	STUD T6931-2 (36232)		EA		2											
X2 O 00392		WASHER T8485 (36232)		EA		2											
X2 O 00393		WASHER T2719 (36232)		EA		4											



ME 3431-207-35P/1

Figure 1. Front Axle, Wheels, and Tongue.

INDEX TO PARTS, FIGURE 1

Reference Number	Functional Group	Item Name
1	1000	SCREW
2	1000	WASHER
3	1000	PIN
3	1311	PIN
4	1000	AXLE
5	1311	WHEEL
6	1311	RETAINER
7	1311	ROLLER
8	1000	NUT
9	1000	BRACKET

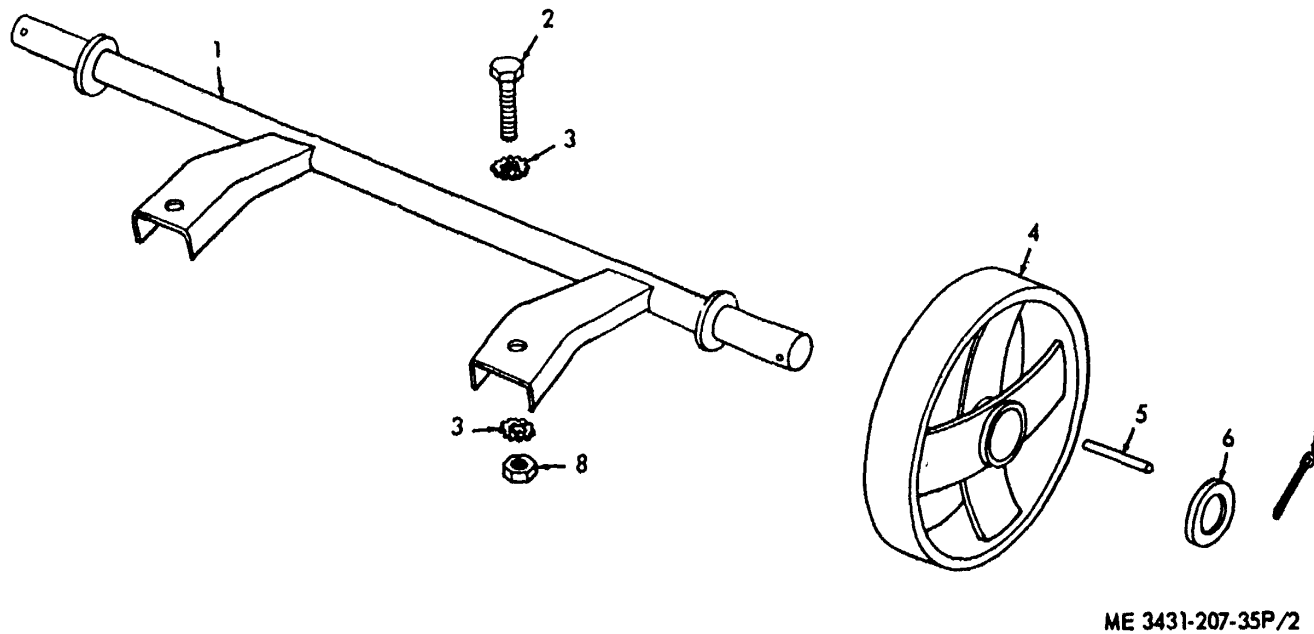


Figure 2. Rear Axle and Wheels.

INDEX TO PARTS, FIGURE 2

Reference Number	Functional Group	Item Name
1	1100	AXLE
2	1100	SCREW
3	1100	WASHER
4	1311	WHEEL
5	1311	ROLLER
6	1311	RETAINER
7	1311	PIN
8	1100	NUT

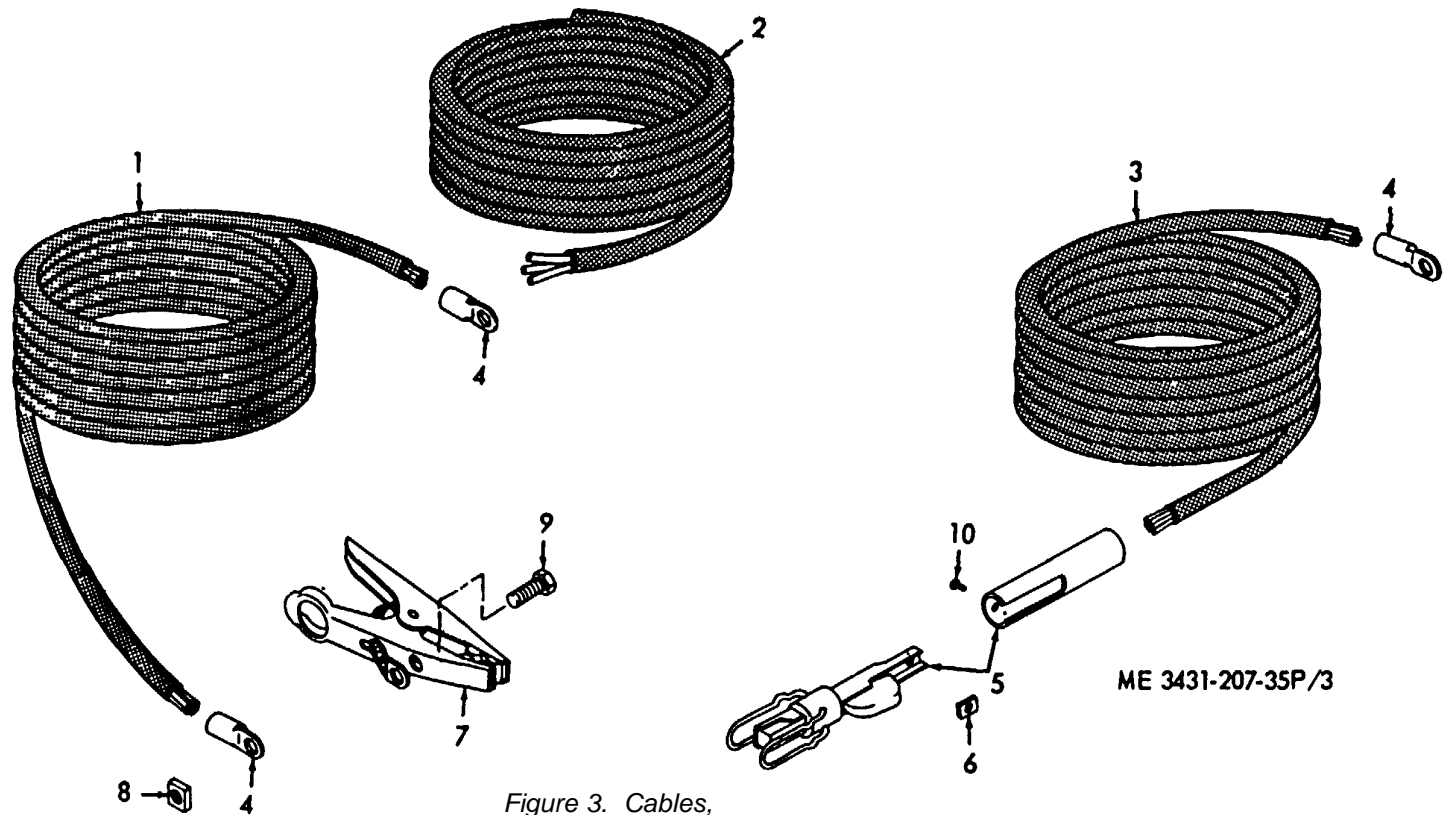
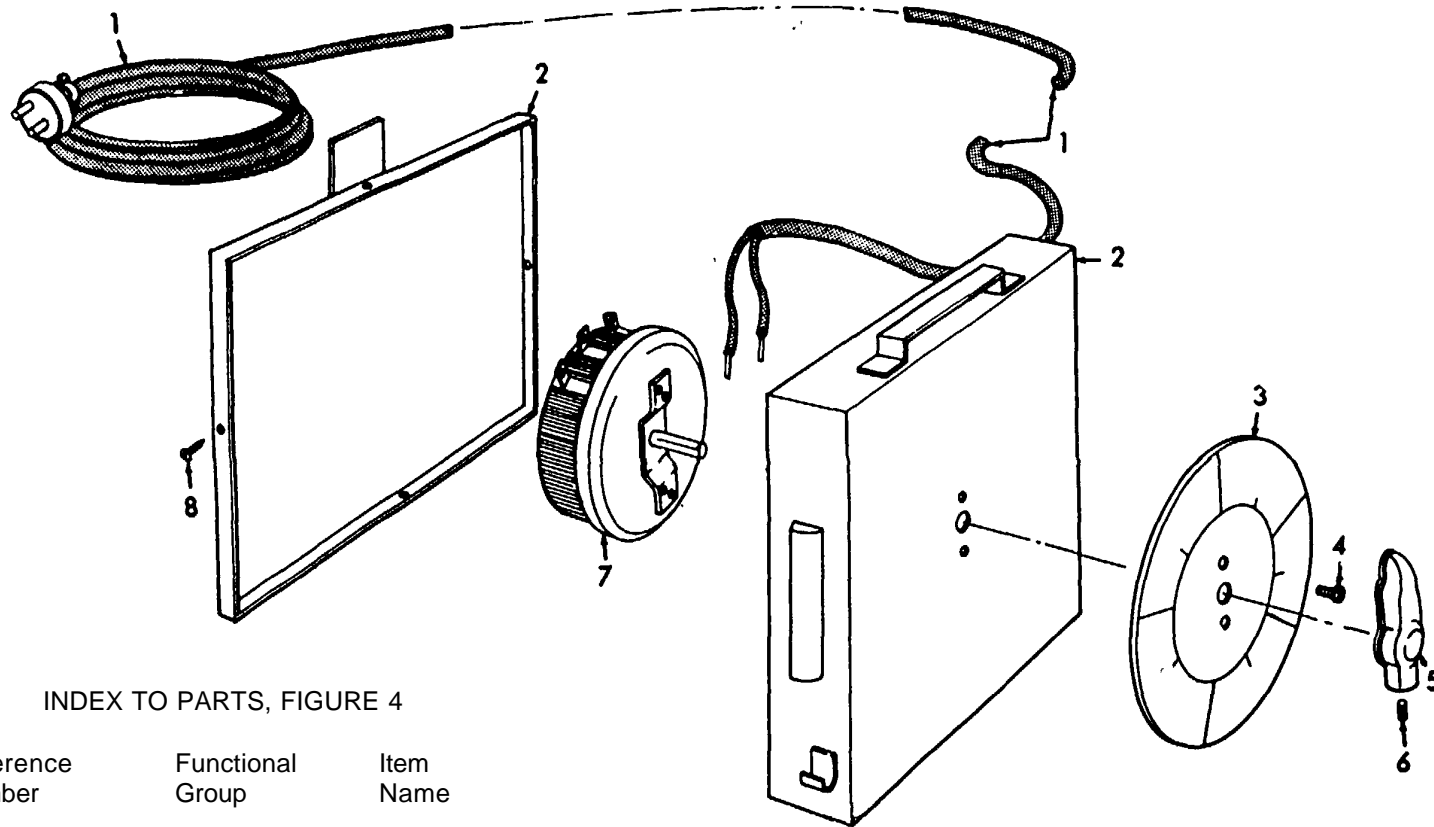


Figure 3. Cables,
INDEX TO PARTS, FIGURE 3

Reference Number	Functional Group	Item Name
1	2202	CABLE AY
2	2202	CABLE
3	2202	CABLE AY
4	2202	TERMINAL
5	2202	HOLDER AY
6	2202	NUT
7	2202	CLAMP
8	2202	NUT
9	2202	SCREW
10	2202	SCREW



INDEX TO PARTS, FIGURE 4

Reference Number	Functional Group	Item Name
1	2202	CABLE
2	2202	CASE
3	2202	PLATE
4	2202	SCREW
5	2202	HANDLE
6	2202	SETSCREW
7	2202	RHEOSTAT
8	2202	SCREW

ME 3431-207-35P/4

Figure 4. Remote Control.

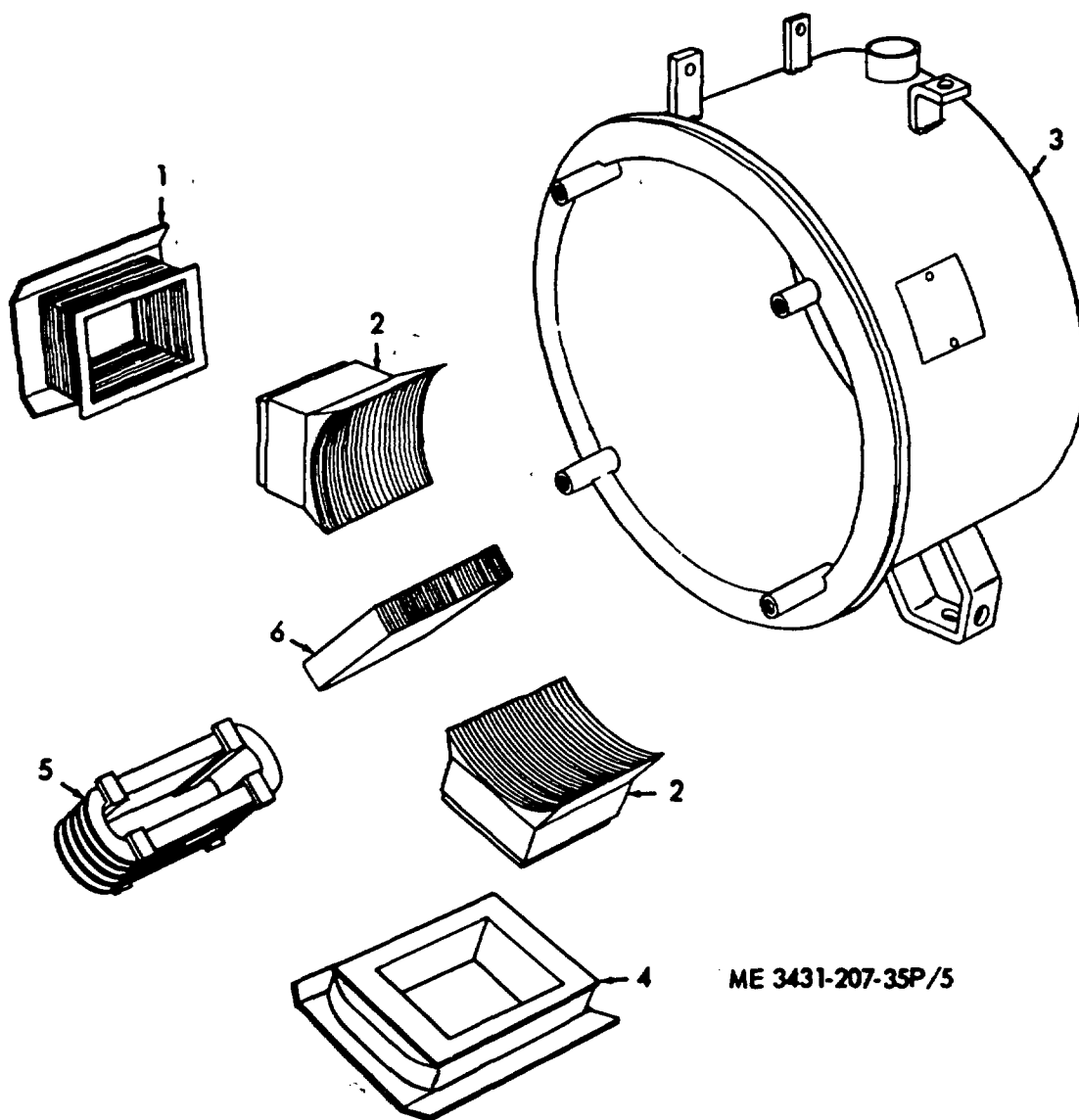


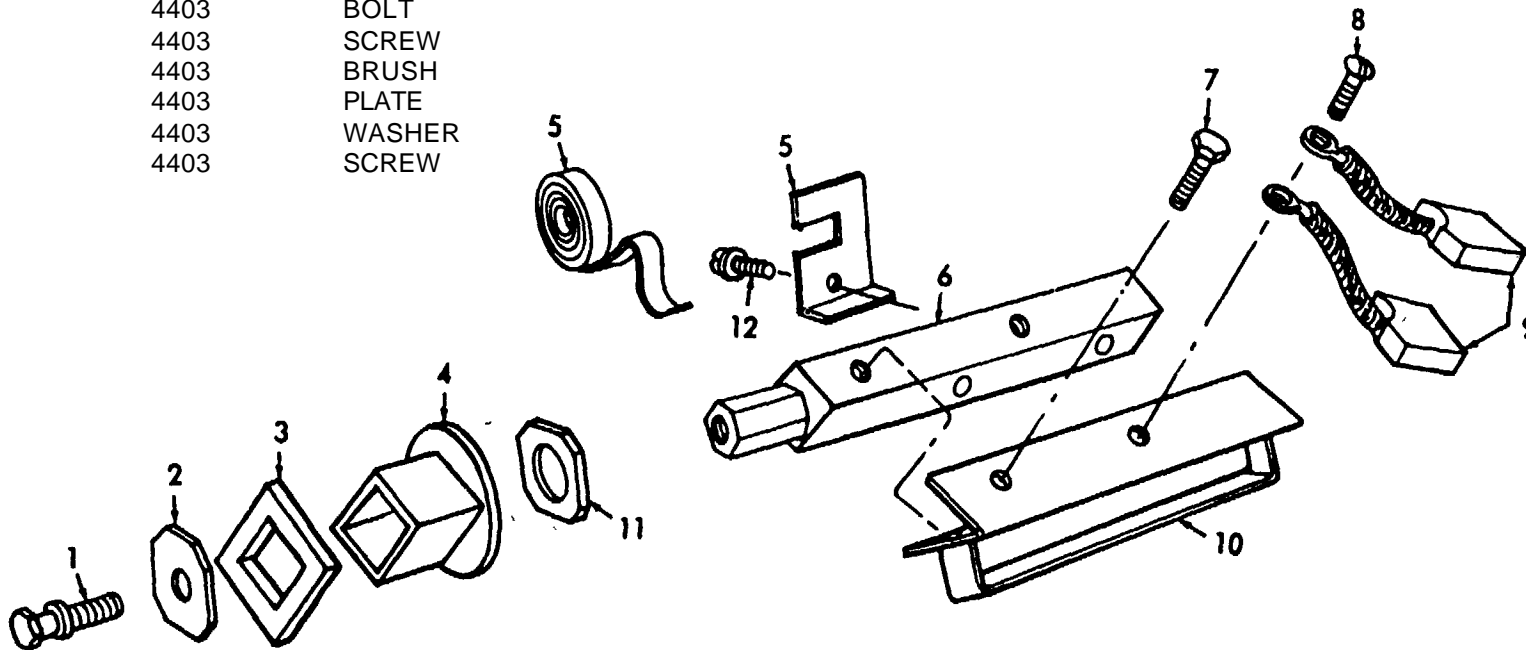
Figure 5. Generator Frame, Coils, and Pole Pieces.

INDEX TO PARTS, FIGURE 5

Reference Number	Functional Group	Item Name
1	4402	COIL SET
2	4402	POLE PIECE
3	4505	FRAME AY
4	4402	COIL SET
5	4402	COIL
6	4402	POLE PIECE

INDEX TO PARTS, FIGURE 6

Reference Number	Functional Group	Item Name
1	4403	SCREW
2	4403	WASHER
3	4403	WASHER
4	4403	TUBE </td
5	4403	SPRING
6	4403	STUD
7	4403	BOLT
8	4403	SCREW
9	4403	BRUSH
10	4403	PLATE
11	4403	WASHER
12	4403	SCREW



ME 3431-207-35P/6

Figure 6. Generator End Brush Holder Assembly.

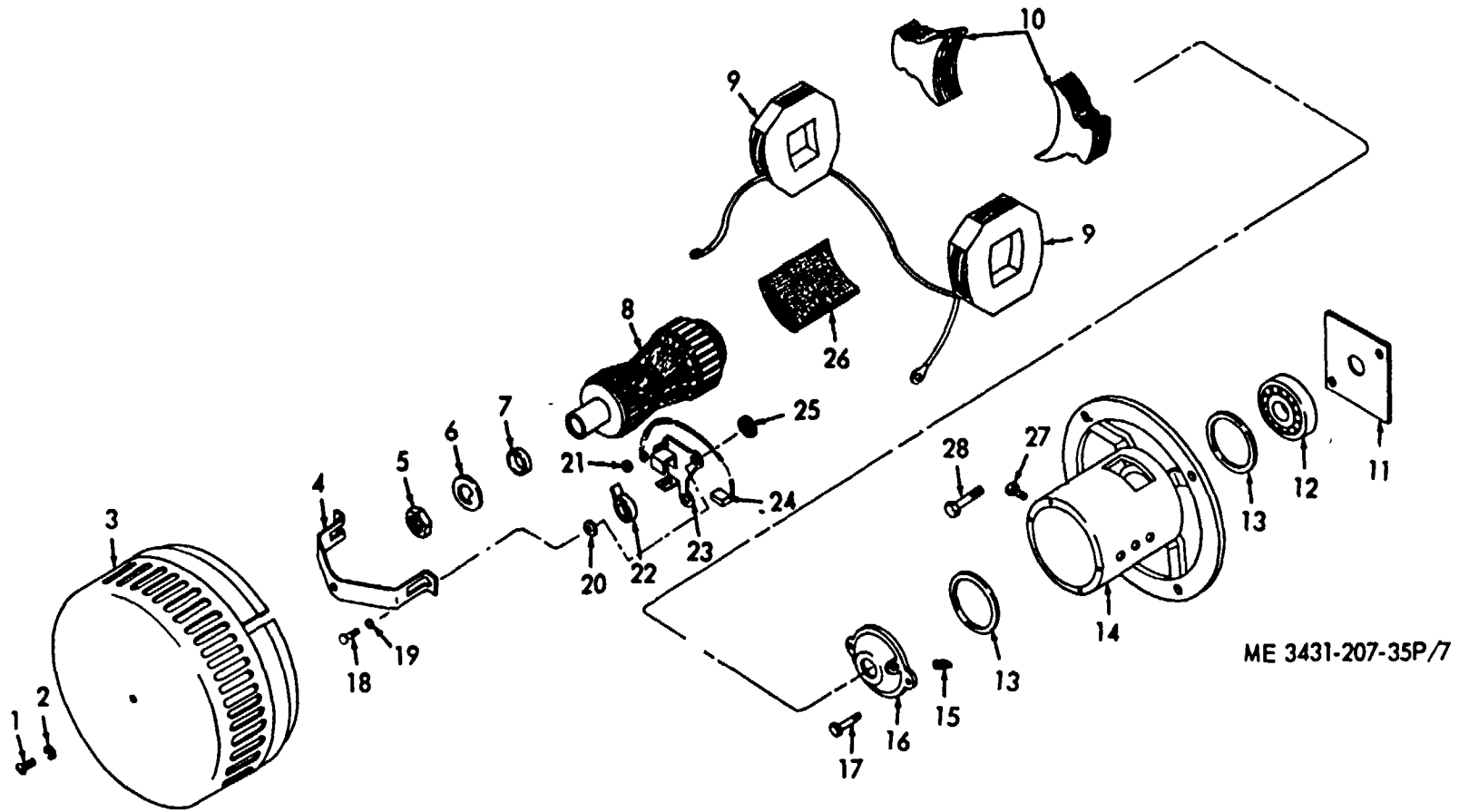
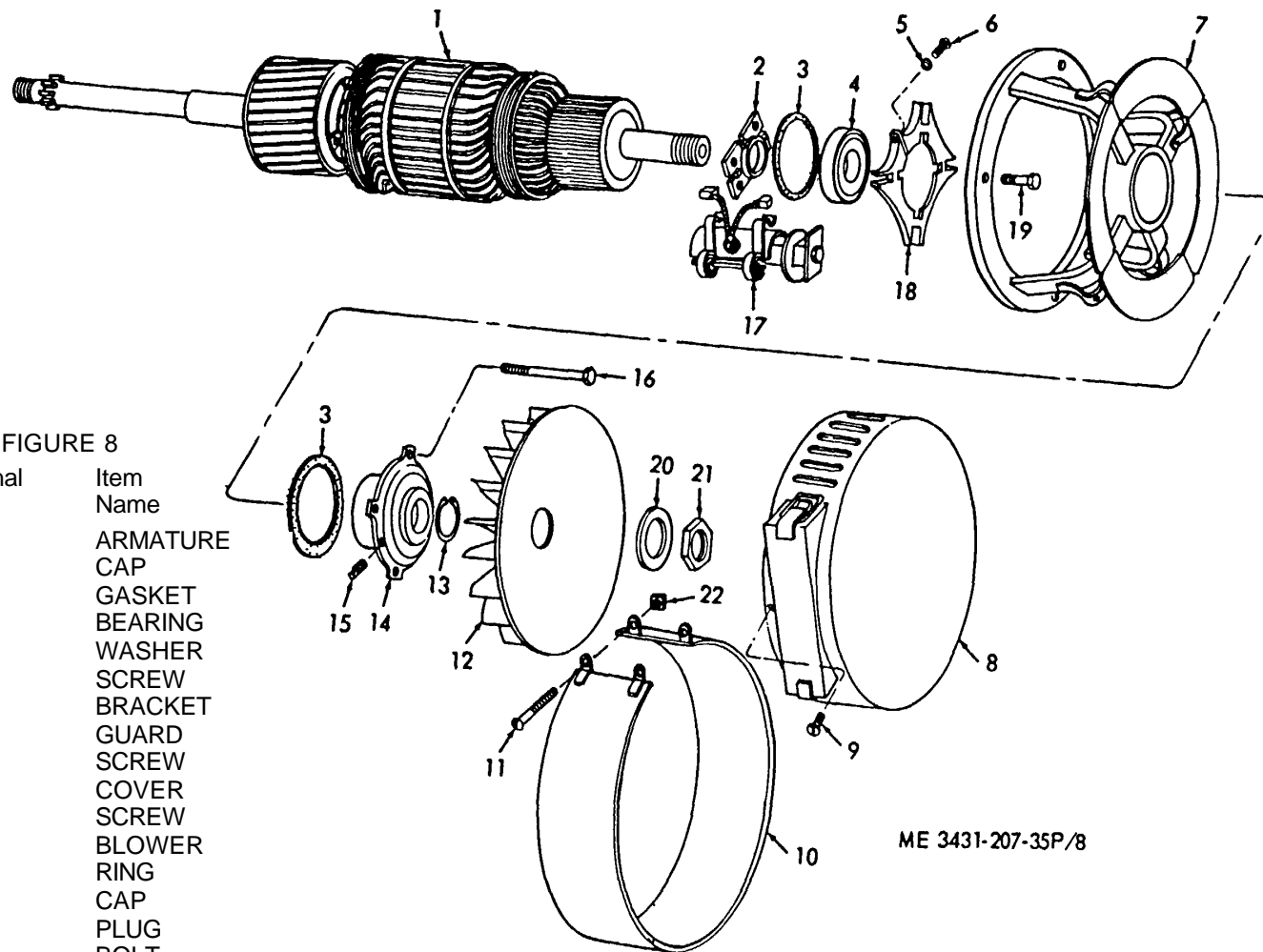


Figure 7. Welder Exciter End.

INDEX TO PARTS. FIGURE 7

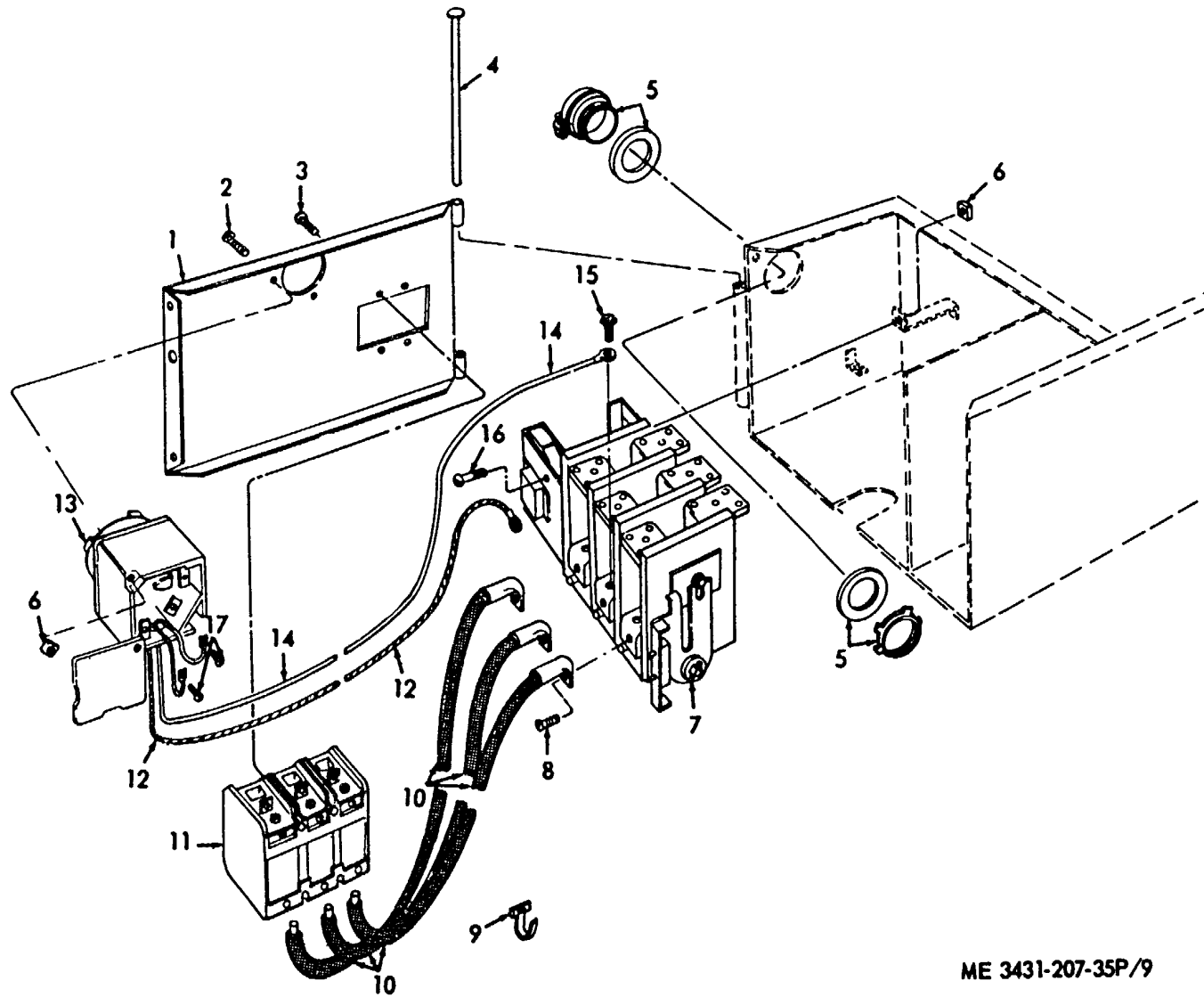
Reference Number	Functional Group	Item Name	Reference Number	Functional Group	Item Name
1	4405	SCREW	15	4405	PLUG
2	4405	WASHER	16	4405	CAP
3	4405	COVER	17	4405	SCREW
4	4405	BRACKET	18	4403	SCREW
5	4401	NUT	19	4403	WASHER
6	4401	WASHER	20	4403	WASHER
7	4401	SPACER	21	4403	NUT
8	4401	ARMATURE	22	4403	SPRING
9	4402	COIL	23	4403	BRUSH HOLDER
10	4402	POLE PIECE	24	4403	BRUSH
11	4405	CAP	25	4403	BUSHING
12	4405	BEARING	26	4403	SHIELD
13	4405	GASKET	27	4402	BOLT
14	4405	BRACKET	28	4405	SCREW



INDEX TO PARTS, FIGURE 8

Reference Number	Functional Group	Item Name
1	4401	ARMATURE
2	4405	CAP
3	4405	GASKET
4	4405	BEARING
5	4403	WASHER
6	4403	SCREW
7	4405	BRACKET
8	4406	GUARD
9	4406	SCREW
10	4405	COVER
11	4405	SCREW
12	4406	BLOWER RING
13	4406	RING
14	4405	CAP
15	4405	PLUG
16	4405	BOLT
17	4403	BRUSH HOLDER AY
18	4403	BRACKET
19	4405	SCREW
20	4406	WASHER
21	4406	NUT
22	4405	NUT

Figure 8. Welder Generator End.

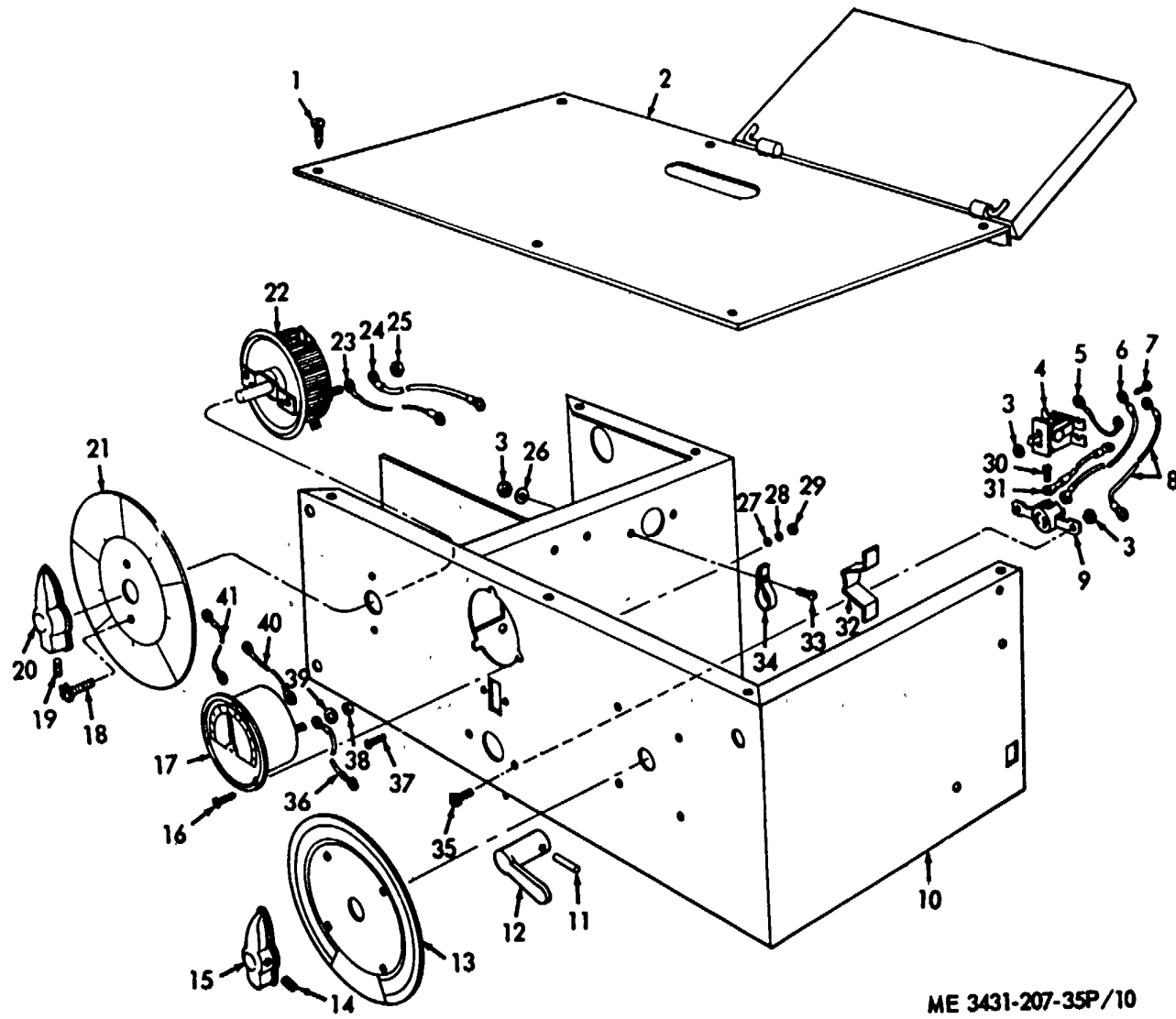


ME 3431-207-35P/9

Figure 9. Control Panel Switch, Circuit Breaker, and Starter.

INDEX TO PARTS, FIGURE 9

Reference Number	Functional Group	Item Number	Reference Number	Functional Group	Item Name
1	4407	DOOR	10	4407	LEAD
2	4410	SCREW	11	4410	CIRCUIT BREAKER
3	4410	SCREW	12	4407	LEAD
4	4407	ROD	13	4410	SWITCH
5	4407	CLAMP	14	4407	LEAD
6	4410	NUT'	15	4407	SCREW
7	4410	STARTER AY	15	4410	SCREW
8	4407	SCREW	16	4410	SCREW
9	4407	TYRAP	17	4410	SCREW

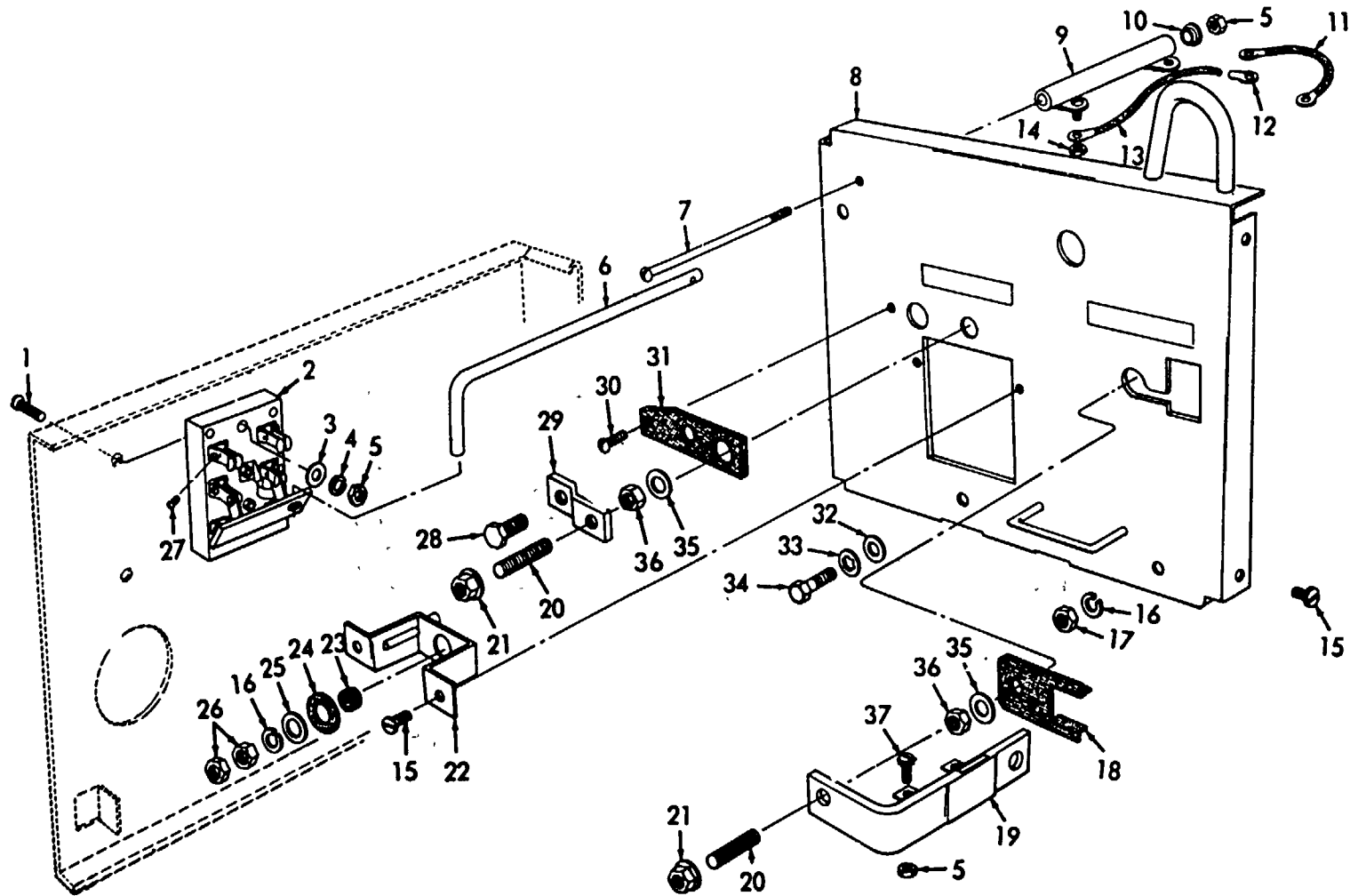


ME 3431-207-35P/10

Figure 10. Control Panel.

INDEX TO PARTS. FIGURE 10

Reference Number	Functional Group	Item Name	Reference Number	Functional Group	Item Name
1	4407	SCREW	21	4411	PLATE
2	4407	COVER	22	4411	RHEOSTAT
3	4407	NUT	23	4407	LEAD
3	4410	NUT	24	4407	LEAD
4	4410	SWITCH	25	4411	NUT
5	4407	LEAD	26	4407	WASHER
6	4407	LEAD	27	4407	WASHER
7	4110	SCREW	28	4407	WASHER
8	4407	LEAD	29	4407	NUT
9	4407	CONNECTOR	30	4407	SCREW
10	4407	BOX	31	4407	LEAD
11	4410	PIN	32	4410	CLIP
12	4410	HANDLE	33	4407	SCREW
13	4412	PLATE	34	4407	CLAMP
14	4412	SETSCREW	35	4407	SCREW
15	4412	HANDLE	36	4407	LEAD
16	4407	SCREW	37	4410	SCREW
17	4407	VOLT-AMP METER	38	4407	NUT
18	4411	SCREW	39	4407	WASHER
19	4411	SETSCREW	40	4407	LEAD
20	4411	HANDLE	41	4407	LEAD

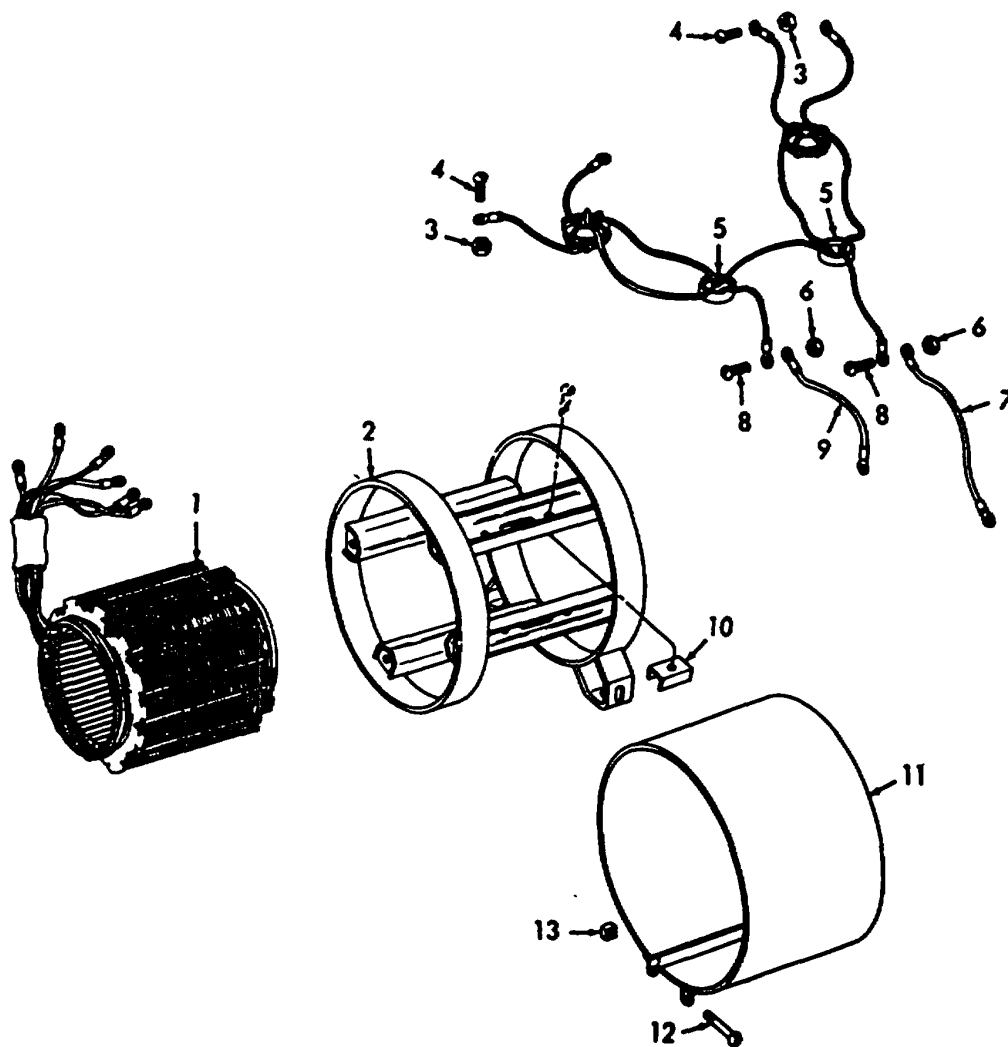


ME 3431-207-35P/11

Figure 11. Electrode and Output Stud Panel and Polarity Switch.

INDEX TO PARTS. FIGURE 11

Reference Number	Functional Group	Item Name	Reference Number	Functional Group	Item Name
1	4410	SCREW	18	4407	INSULATOR
2	4410	SWITCH	19	4407	STRAP
3	4410	WASHER	20	4407	STUD
4	4410	WASHER	21	4407	NUT
5	4407	NUT	22	4412	BRACKET
5	4410	NUT	23	4412	BUSHING
5	4411	NUT	24	4412	WASHER
6	4410	ROD	25	4412	WASHER
7	4411	SCREW	26	4412	NUT
8	4407	PANEL	27	4410	SCREW
9	4411	RESISTOR	28	4407	SCREW
10	4411	WASHER	29	4407	STRAP
11	4407	LEAD	30	4407	SCREW
12	4407	TERMINAL	31	4407	INSULATOR
13	4407	LEAD	32	4407	WASHER
14	4411	NUT	33	4407	WASHER
15	4407	SCREW	34	4407	SCREW
16	4407	WASHER	35	4407	WASHER
17	4407	NUT	36	4407	NUT
			37	4407	SCREW

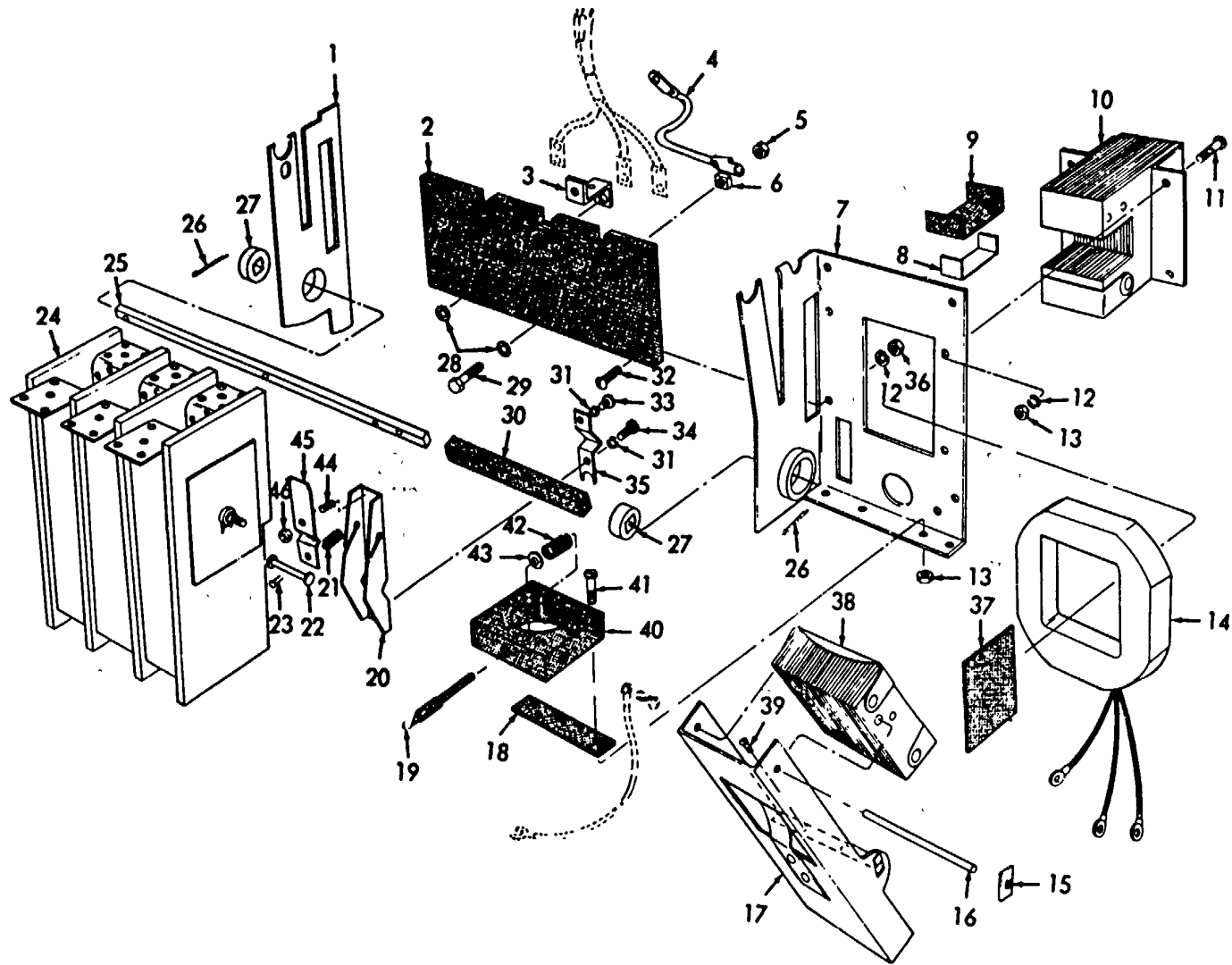


ME 3431-207-35P/12

Figure 12. Motor Stator, Thermostats, and Frame.

INDEX TO PARTS, FIGURE 12

Reference Number	Functional Group	Item Name
1	4402	STATOR
2	4405	FRAME
3	4409	NUT
4	4409	SCREW
5	4409	THERMOSTAT AY
6	4407	NUT
7	4407	LEAD
8	4407	SCREW
9	4407	LEAD
10	4409	CLAMP
11	4405	COVER
12	4405	SCREW
13	4405	NUT



ME 3431-207-35P/13

Figure 13. Starter Assembly.

INDEX TO PARTS, FIGURE 13

Reference Number	Functional Group	Item Name	Reference Numb.	Functional Group	Item Name
1	4410	PANEL	24	4410	BARRIER
2	4410	BLOCK	25	4410	SHAFT
3	4410	CONTACT	26	4410	PIN
4	4410	LEAD	27	4410	BUSHING
5	4410	NUT	28	4410	WASHER
6	4410	NUT	29	4410	BOLT
7	4410	PANEL	30	4410	INSULATION'
8	4410	CLAMP	31	4410	WASHER
9	4410	INSULATOR	32	4410	SCREW
10	4410	BLOCK	33	4410	SCREW
11	4410	SCREW	34	4410	SCREW
12	4410	WASHER	35	4410	CLAMP
13	4410	NUT	36	4410	NUT
14	4410	COIL	37	4410	RETAINER
15	4410	CLIP	38	4410	BLOCK
16	4410	PIN	39	4410	SCREW
17	4410	HOLDER	40	4410	BLOCK
18	4410	INSULATOR	41	4410	SCREW
19	4410	PLUNGER	42	4410	SP RING
10	4410	ARM	43	4410	WASHER
21	4410	SPRING	44	4410	SCREW
22	4410	PIN	45	4410	CONTACT
23	4410	SCREW	46	4410	NUT

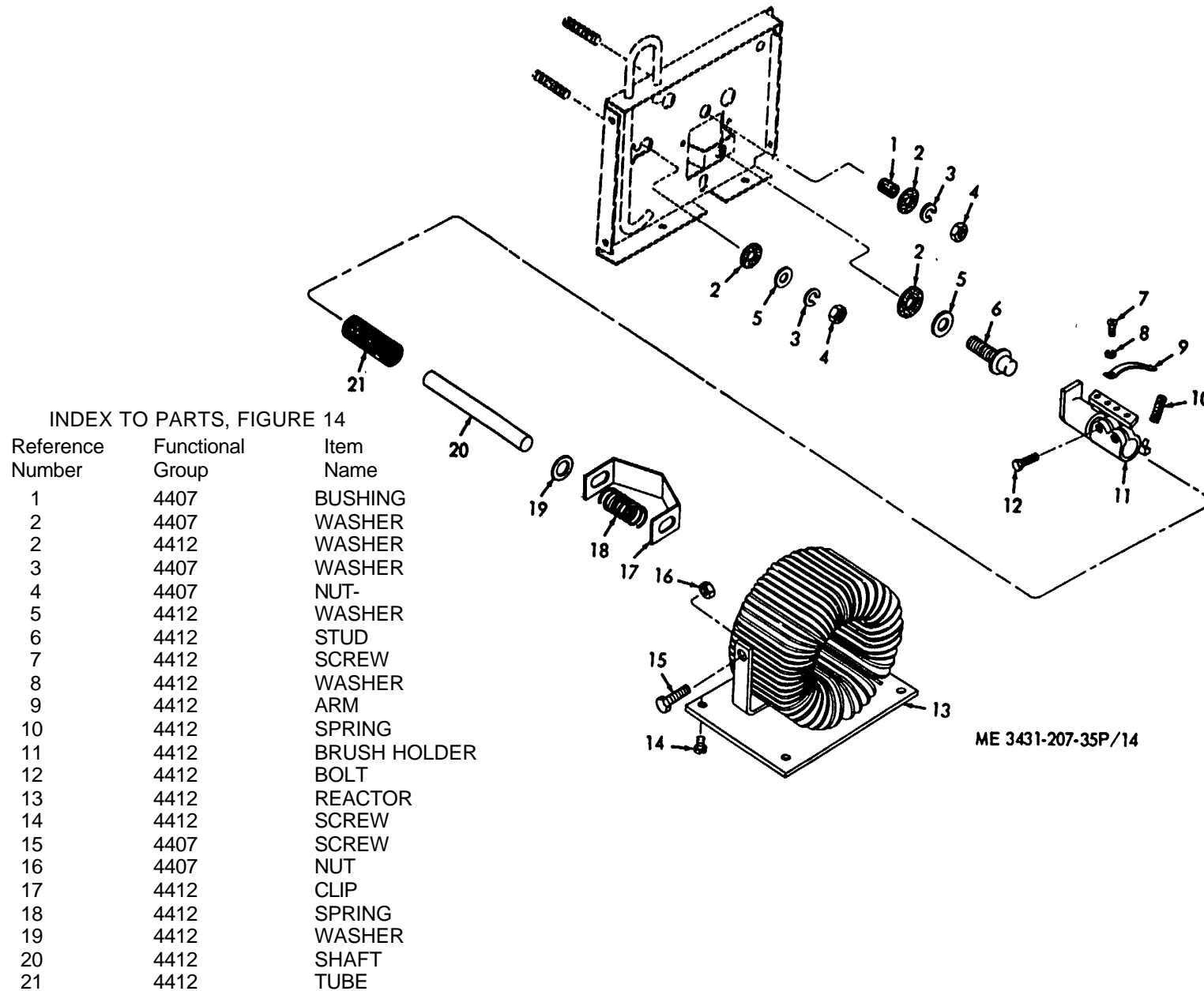


Figure 14. Reactor and Brush Holder Assembly.

**SECTION IV. INDEX-FEDERAL STOCK NUMBER AND REFERENCE NUMBER
CROSS-REFERENCE TO INDEX NUMBER**

<u>STOCK NUMBER</u>	<u>INDEX NUMBER</u>	<u>STOCK NUMBER</u>	<u>INDEX NUMBER</u>
2920-988-9940	00057	5305-819-5368	00323
3110-540-4606	00111	5305-836-8476	00234
3110-995-3226	00110	5305-840-6694	00225
3431-800-0240	00126	5305-889-3002	00150
3431-802-6841	00352	5305-908-1721	00226
3431-802-6844	00358	5305-965-7306	00143
3431-954-2854	00292	5305-984-5674	00091
3431-954-2875	00293	5305-984-5682	00105
3431-954-4215	00027	5305-984-6210	00325
3431-954-4216	00028	5305-984-6212	00277
3431-954-4220	00065	5305-984-6212	00278
3431-960-2716	00334	5305-984-6212	00317
3431-969-0523	00327	5305-988-1720	00321
3431-986-8450	00034	5305-988-1721	00089
3431-994-9301	00042	5305-988-1721	00227
3431-994-9301	00349	5305-988-1723	00261
3431-995-1911	00066	5305-988-1723	00316
3431-995-3231	00063	5305-988-9265	00131
3442-618-0115	00043	5305-988-9265	00135
4730-044-4569	00129	5306-225-8494	00083
4730-044-4569	00130	5306-225-8499	00062
5305-010-0157	00229	5306-225-8499	00353
5305-010-7394	00230	5307-207-1867	00040
5305-010-7394	00375	5307-984-7541	00240
5305-011-0498	00075	5307-984-7541	00243
5305-011-0499	00318	5307-984-7541	00391
5305-042-5673	00045	5310-010-3028	00005
5305-042-0478	00228	5310-010-3028	00012
5305-042-0478	00276	5310-010-3319	00328
5305-042-0479	00270	5310-010-3323	00255
5305-042-0479	00271	5310-010-3337	00256
5305-042-0479	00279	5310-010-5616	00306
5303-044-4153	00231	5310-010-6495	00257
5305-052-6921	00133	5310-011-0633	00305
5305-057-9610	00053	5310-011-5545	00078
5305-059-8248	00275	5310-011-5545	00329
5305-059-8248	00333	5310-011-5549	00248
5305-071-1769	00132	5310-012-0214	00090
5305-071-2235	00134	5310-012-0214	00108
5305-151-1229	00274	5310-012-0361	00304
5305-151-1229	00335	5310-012-0384	00245
5305-171-1767	00033	5310-012-0384	00250
5305-225-9081	00286	5310-013-1395	00127
5305-269-3209	00086	5310-013-1395	00128
5305-269-3209	00224	5310-017-8599	00008
5305-275-9837	00315	5310-017-8599	00014
5305-275-9838	00314	5310-043-2226	00370
5305-298-9735	00320	5310-045-3296	00336
5305-608-8307	00041	5310-059-4264	00221
5305-608-8307	00232	5310-147-2065	00137
5305-608-8307	00233	5310-167-0834	00253
5305-608-8307	00235	5310-167-0834	00337
5305-608-8307	00347	5310-176-8137	00071
5305-608-8308	00376	5310-176-8137	00103
5305-637-1125	00236	5310-176-8137	00213
5305-639-4863	00356	5310-176-8137	00218
5305-725-4183	00007	5310-176-8137	00219
5305-725-4183	00013	5310-176-8137	00268
5305-782-9494	00136	5310-176-8137	00269
5305-817-5443	00348	5310-176-8137	00341

<u>STOCK NUMBER</u>	<u>INDEX NUMBER</u>	<u>STOCK NUMBER</u>	<u>INDEX NUMBER</u>
5310-187-2390	00249	5940-636-7114	00192
5310-205-7782	00258	5940-636-7114	00196
5310-275-1706	00220	5940-754-5301	00209
5310-514-6674	00330	5940-955-9445	00046
5310-543-2705	00087	5945-954-4214	00262
5310-584-5005	00260	5950-960-2787	00291
5310-596-7691	00324	5950-961-1209	00374
5310-616-6949	00342	5970-587-5717	00094
5310-639-1098	00340	5970-967-4278	00101
5310-685-1429	00032	5975-027-4581	00246
5310-685-1429	00214	5975-258-0126	00031
5310-685-1429	00216	5975-296-6086	00147
5310-685-1429	00217	5977-088-7132	00098
5310-822-0984	00212	5977-088-7133	00354
5310-822-0984	00215	5977-088-7134	00082
5310-879-6493	00254	5977-237-1582	00102
5310-988-5844	00044	5977-237-1609	00081
5310-988-5844	00211	5977-967-4279	00099
5315-236-8359	00312	5977-995-3230	00351
5315-282-1448	00006	6105-031-2826	00100
5315-282-1448	00017	6105-989-0531	00076
5315-282-1448	00018	6115-587-5718	00059
5315-664-7598	00052	6115-587-5722	00092
5330-995-1913	00125	6115-827-0003	00064
5340-598-8062	00148	6115-980-5837	00242
5340-980-5834	00359	6115-980-5837	00362
5905-718-6063	00039	6115-980-5837	00385
5905-718-6063	00346	6125-988-9941	00056
5905-718-6063	00389	6125-195-5608	00158
5905-752-7467	00344	6145-195-5608	00165
5925-954-4211	00265	6145-195-5608	00169
5930-960-2786	00331	6145-195-5608	00173
5930-961-1192	00332	6145-195-5608	00179
5935-929-0301	00149	6145-195-5608	00183
5940-020-0005	00175	6145-195-5608	00186
5940-050-6209	00193	6145-195-5608	00190
5940-155-9686	00068	6145-195-5608	00194
5940-155-9686	00160	6145-195-5608	00198
5940-155-9686	00201	6145-195-5608	00381
5940-155-9686	00205	6145-578-7521	00070
5940-177-7910	00163	6145-578-7521	00161
5940-177-7910	00167	6145-578-7521	00176
5940-177-7910	00171	6145-578-7521	00202
5940-177-7910	00178	6145-578-7521	00206
5940-177-7910	00181	6145-578-7521	00210
5940-177-7910	00185	6145-578-7521	00382
5940-197-9772	00069	6145-807-8257	00030
5940-504-5878	00204	6145-807-8257	00380
5940-504-5878	00208	6625-954-2709	00247
5940-505-5878	00200	6625-954-2873	00237
5940-636-7114	00189	9905-807-3712	00050

SECTION IV INDEX-FEDERAL STOCK NUMBER AND REFERENCE NUMBER
CROSS-REFERENCE TO INDEX NUMBER (Continued)

<u>REFERENCE NO.</u>	<u>MFG CODE</u>	<u>INDEX NO.</u>	<u>REFERENCE NO.</u>	<u>MFG CODE</u>	<u>INDEX NO.</u>
AN335-5	88044	00307	M6264	36232	00354
AN515R10-6	88044	00319	M6277	36232	00351
AN565D1024H3	88044	00042	M6327	36232	00043
AN565D1024H3	88044	00349	M6332	36232	00114
AN565E416H6	88044	00377	M6574A	36232	00334
B71G	59730	00193	M6963-6	36232	00093
B85G	59730	00192	M6964-1B	36232	00084
B85G	59730	00196	M6964-9A	36232	00082
B86G	59730	00163	M7393	36232	00120
B86G	59730	00167	M7539-1	36232	00076
B86G	59730	00171	S12261-6	36232	00064
B86G	59730	00178	S2703	36232	00281
B86G	59730	00181	S2709	36232	00284
B86G	59730	00185	S3981	36232	00309
B87G	59730	00157	S3982	36232	00308
B87G	59730	00164	S4519	36232	00140
B87G	59730	00168	S45736	36232	00073
B87G	59730	00172	S4771	36232	00326
B87G	59730	00182	S4775	36232	00294
B87G	59730	00188	S4934	36232	00247
B87G	59730	00189	S5435	36232	00117
B87G	59730	00197	S5436	36232	00116
C33	59730	00069	S5717	36232	00024
C36	59730	00068	S5960	36232	00080
C36	59730	00160	S5961	36232	00118
C36	59730	00201	S5962	36232	00119
C36	59730	00205	S6116	36232	00023
EPW1001	36024	00036	S6509	36232	00222
EOW1000	36024	00034	S6514	36232	00285
EOW1003	36232	00035	S6531A	36232	00098
FBS24-80	36232	00057	S6602-2	36232	00237
FBS5E	36232	00063	S6650	36232	00152
FXL120M	36232	00065	S6751-1	36232	00191
FKL5E	32322	00066	S6751-2	36232	00187
LA2175	36024	00155	S6751-3	36232	00177
LA300-1831	36024	00028	S6751-4	36232	00174
LA300-1832	36024	00027	S6848-2	36232	00113
L2036C	36232	00374	S7297	36232	00290
L2145-5	36232	00056	S7297	36232	00355
L2295A	36232	00146	S7297-1	36232	00266
L2296	36232	00280	S7297-3	36232	00373
L2832-13	36232	00262	S8158	36232	00037
L2944-2	36232	00139	S8158	36232	00339
L4024	36232	00372	S8158	36232	00386
MRC309CFF	38443	00110	S8267	36232	00011
MS0906C	36232	00346	S9225-1	36232	00104
MS21919G4	96906	00148	S9262-34	36232	00019
MS35291-46	96906	00112	S9262-34	36232	00020
M10088	36232	00038	S9262-34	36232	00388
M10088	36232	00343	TY25	59730	00246
M10088	36232	00387	T10114	36232	00363
M4129	36232	00122	T10210-1	36232	00142
M4165A1	36232	00121	T1095	36232	00107
M4941	36232	00332	T10990	36232	00051
M5090C	36232	00039	T120	36024	00046
M5090C	36232	00389	T1450	36232	00094
M5382	36232	00282	T2414	36232	00096
M55566-1	36232	00115	T2454	36232	00106
M5939	36232	00151	T2719	36232	00244
M6062	36232	00123	T2719	36212	00251

SECTION IV. INDEX-FEDERAL STOCK NUMBER AND REFERENCE NUMBER
CROSS-REFERENCE TO INDEX NUMBER (Continued)

<u>REFERENCE NO.</u>	<u>MFG CODE</u>	<u>INDEX NO.</u>	<u>REFERENCE NO.</u>	<u>MFG CODE</u>	<u>INDEX NO.</u>
T2719	36232	00366	T6931-2	36232	00391
T2719	36232	00367	T6968	36232	00081
T2719	36232	00393	T6985	36232	00358
T3107	36232	00141	T6988-1	36232	00003
T3110	36232	00144	T7090-1	36232	00060
T344	36232	00102	T7208	36232	00021
T3545	36232	00059	T7208	36232	00022
T3633-11	36232	00126	T7208	36232	00390
T3633-2	36232	00125	T7233	36232	00004
T3797	36232	00303	T7494	36232	00352
T3798	36232	00292	T7626	36232	00101
T3803	36232	00299	T7711	36232	00293
T3804	36232	00300	T7843	36232	00154
T3805	36232	00301	T7845	36232	00239
T3811-1	36232	00283	T7850	36232	00361
T3817	36232	00287	T7852	36232	00360
T1819	36232	00310	T7873	36232	00302
T3820	36232	00313	T8141	36232	00238
T3825	36232	00288	T8167	36212	00099
T3846	36232	00153	T8218	36232	00357
T3940-4	36232	00072	T8219	36232	00369
T3961	36232	00048	T8230-1	36232	00241
T3962	36232	00049	T8236	36232	00359
T4336	36232	00327	T8280	36232	00344
T4453	36232	00297	T8485	36232	00252
T4479	36232	00095	T8485	36232	00368
T4795	36232	00311	T8485	36232	00392
T5163	36232	00074	T8495	36232	00092
T5239	36232	00298	T9020	36232	00097
T5411	36232	00242	T9107	36232	00364
T5411	36232	00362	T9262-1	36232	00365
T5411	36232	00385	XL3-2	36232	00291
T5418	36232	00267	15234	03743	00147
T5736	36232	00298	20E525	01411	00265
T5803-3	36232	00295	3-32X3-4	00287	00272
T6082	36232	00289	310CFFQ6B7MILL7711	38443	00111
T6225-1	36232	00058	32994	04618	00200
T6367	36232	00371	32994	04618	00204
T6380	36232	00273	32994	04618	00208
T6887	36232	00100	35135	04618	00209
T6931-2	36232	00240	7210	74545	00149
T6931-2	36232	00243	9623	74545	00331

By Order of the Secretary of the Army:

Official:

W.C. WESTMORELAND,
General, United States Army,
Chief of Staff

KENNETH G. WICKHAM,
Major General, United States Army,
The Adjutant General

Distribution:

To be distributed in accordance with DA Form 1225, See I (qty rqr Block No. 183), Direct and General Support maintenance requirements for Welding Equipment.

☆U.S. GOVERNMENT PRINTING OFFICE: 1991 O -281-486 (42040)

